

For Research Use Only

MREG Polyclonal antibody

Catalog Number: 14207-1-AP



Basic Information

Catalog Number:

14207-1-AP

Size:

150ul , Concentration: 400 ug/ml by Nanodrop and 233 ug/ml by Bradford method using BSA as the standard;

Source:

Rabbit

Isotype:

IgG

Immunogen Catalog Number:

AG5416

GenBank Accession Number:

BC032747

GeneID (NCBI):

55686

UNIPROT ID:

Q8N565

Full Name:

melanoregulin

Calculated MW:

25kDa

Observed MW:

26 kDa

Purification Method:

Antigen affinity purification

Recommended Dilutions:

WB 1:1000-1:5000

Applications

Tested Applications:

WB, ELISA

Species Specificity:

human

Positive Controls:

WB : MCF-7 cells,

Background Information

MREG, also known as DSU, belongs to the melanoregulin family. MREG is a small, highly charged protein thought to play a role in organelle biogenesis due to its effect on pigmentation in dilute, ashen, and leaden mutant mice (PMID: 19240024). Additionally, MREG probably functions as a cargo-recognition protein that couples cytoplasmic vesicles to the transport machinery. MREG has 2 isoforms with the molecular weights of 25 and 26 kDa.

Storage

Storage:

Store at -20°C. Stable for one year after shipment.

Storage Buffer:

PBS with 0.02% sodium azide and 50% glycerol pH 7.3.

Aliquoting is unnecessary for -20°C storage

*** 20ul sizes contain 0.1% BSA

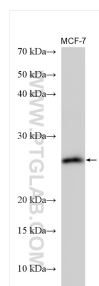
For technical support and original validation data for this product please contact:

T: 1 (888) 4PTGLAB (1-888-478-4522) (toll free in USA), or 1(312) 455-8498 (outside USA)

E: proteintech@ptglab.com
W: ptglab.com

This product is exclusively available under Proteintech Group brand and is not available to purchase from any other manufacturer.

Selected Validation Data



MCF-7 cells were subjected to SDS PAGE followed by western blot with 14207-1-AP (MREG antibody) at dilution of 1:2500 incubated at room temperature for 1.5 hours.