

For Research Use Only

CD39/ENTPD1 Polyclonal antibody

Catalog Number: 14211-1-AP

6 Publications



Basic Information

Catalog Number: 14211-1-AP	GenBank Accession Number: BC047664	Purification Method: Antigen affinity purification
Size: 150ul , Concentration: 300 µg/ml by Nanodrop;	GeneID (NCBI): 953	Recommended Dilutions: WB 1:200-1:1000 IHC 1:50-1:500 IF 1:20-1:200
Source: Rabbit	Full Name: ectonucleoside triphosphate diphosphohydrolase 1	
Isotype: IgG	Calculated MW: 58 kDa	
Immunogen Catalog Number: AG5429	Observed MW: 50 kDa 70-100 kDa	

Applications

Tested Applications:
FC, IF, IHC, WB, ELISA

Cited Applications:
IF, IHC, WB

Species Specificity:
human, mouse, rat

Cited Species:
human, rat, mouse

Note-IHC: suggested antigen retrieval with TE buffer pH 9.0; (*) Alternatively, antigen retrieval may be performed with citrate buffer pH 6.0

Positive Controls:

WB : mouse placenta tissue, human placenta tissue

IHC : human placenta tissue, human tonsillitis tissue, human liver tissue

IF : HeLa cells,

Background Information

ENTPD1(Ectonucleoside triphosphate diphosphohydrolase 1) is also named as CD39, NTPDase 1, Ecto-ATPDase 1 and belongs to the GDA1/CD39 NTPase family. In the nervous system, it can hydrolyze ATP and other nucleotides to regulate purinergic neurotransmission. It is a noncovalent tetrameric protein and that detergent inhibition of enzymatic activity is caused by dissociation of ectoapyrase tetramers into monomers(PMID: 9733785). And it is a 70- to 100-kDa protein that is heavily N-glycosylated(PMID:7930580). This protein has 6 glycosylation sites and 3 isoforms(58 kDa, 59 kDa and 34 kDa) produced by alternative splicing.

Notable Publications

Author	Pubmed ID	Journal	Application
Moyuru Hayashi	33146549	Am J Physiol Gastrointest Liver Physiol	IHC
Federica Costa	28915615	Oncotarget	IHC
Xing-Cheng Zhao	29996846	BMC Med Genomics	WB

Storage

Storage:

Store at -20°C. Stable for one year after shipment.

Storage Buffer:

PBS with 0.02% sodium azide and 50% glycerol pH 7.3.

Aliquoting is unnecessary for -20°C storage

*** 20ul sizes contain 0.1% BSA

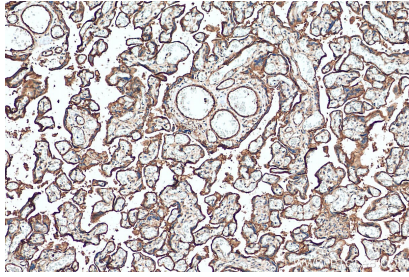
For technical support and original validation data for this product please contact:

T: 1 (888) 4PTGLAB (1-888-478-4522) (toll free in USA), or 1(312) 455-8498 (outside USA)

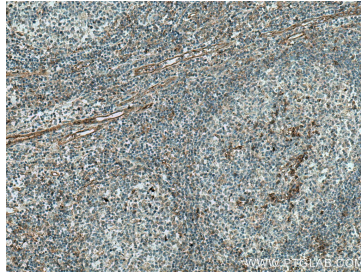
E: proteintech@ptglab.com
W: ptglab.com

This product is exclusively available under Proteintech Group brand and is not available to purchase from any other manufacturer.

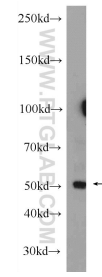
Selected Validation Data



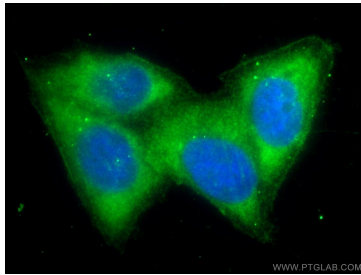
Immunohistochemical analysis of paraffin-embedded human placenta tissue slide using 14211-1-AP (CD39/ENTPD1 antibody) at dilution of 1:200 (under 10x lens). Heat mediated antigen retrieval with Tris-EDTA buffer (pH 9.0).



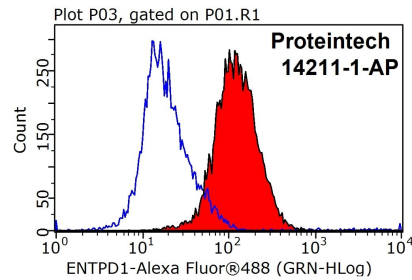
Immunohistochemical analysis of paraffin-embedded human tonsillitis tissue slide using 14211-1-AP (CD39/ENTPD1 antibody) at dilution of 1:200 (under 10x lens). Heat mediated antigen retrieval with Tris-EDTA buffer (pH 9.0).



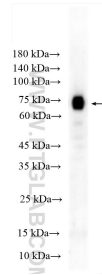
mouse placenta tissue were subjected to SDS PAGE followed by western blot with 14211-1-AP (ENTPD1 Antibody) at dilution of 1:300 incubated at room temperature for 1.5 hours.



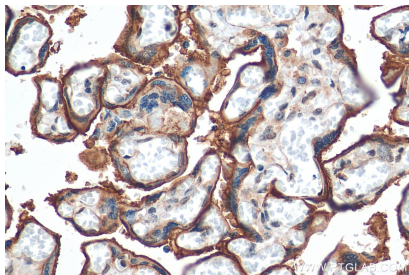
Immunofluorescent analysis of HeLa cells using 14211-1-AP (ENTPD1 antibody) at dilution of 1:50 and Alexa Fluor 488-conjugated AffiniPure Goat Anti-Rabbit IgG(H+L).



1x10⁶ Jurkat cells were stained with 0.5ug ENTPD1 antibody (14211-1-AP, red) and control antibody (blue). Fixed with 90% MeOH blocked with 3% BSA (30 min). Alexa Fluor 488-conjugated AffiniPure Goat Anti-Rabbit IgG(H+L) with dilution 1:1000.



human placenta tissue were subjected to SDS PAGE followed by western blot with 14211-1-AP (CD39/ENTPD1 antibody) at dilution of 1:500 incubated at room temperature for 1.5 hours.



Immunohistochemical analysis of paraffin-embedded human placenta tissue slide using 14211-1-AP (CD39/ENTPD1 antibody) at dilution of 1:200 (under 40x lens). Heat mediated antigen retrieval with Tris-EDTA buffer (pH 9.0).