

For Research Use Only

KChIP1 Polyclonal antibody

Catalog Number: 14212-1-AP



Basic Information

Catalog Number:
14212-1-AP

Size:
150ul, Concentration: 133 µg/ml by Bradford method using BSA as the standard;

Source:
Rabbit

Isotype:
IgG

Immunogen Catalog Number:
AG5432

GenBank Accession Number:
BC050375

GeneID (NCBI):
30820

Full Name:
Kv channel interacting protein 1

Calculated MW:
227 aa, 27 kDa

Observed MW:
25 kDa

Purification Method:
Antigen affinity purification

Recommended Dilutions:
WB 1:500-1:2000
IP 0.5-4.0 ug for IP and 1:200-1:1000 for WB
IHC 1:20-1:200

Applications

Tested Applications:
FC, IHC, IP, WB, ELISA

Species Specificity:
human

Note-IHC: suggested antigen retrieval with TE buffer pH 9.0; (*) Alternatively, antigen retrieval may be performed with citrate buffer pH 6.0

Positive Controls:

WB: human cerebellum tissue, human brain tissue

IP: fetal human brain tissue,

IHC: human pancreas cancer tissue,

Background Information

Human K(v) channel interacting protein 1 (KCHIP1) is a new member of the neural calcium binding protein superfamily. Members of the KCNIP family are small calcium binding proteins. They all have EF-hand-like domains, and differ from each other in the N-terminus. They are integral subunit components of native Kv4 channel complexes. They may regulate A-type currents, and hence neuronal excitability, in response to changes in intracellular calcium. KCHIP1 is a neuronal calcium sensor protein that is predominantly expressed at GABAergic synapses and it has been related with modulation of K(+) channels, GABAergic transmission and cell death.

Storage

Storage:

Store at -20°C. Stable for one year after shipment.

Storage Buffer:

PBS with 0.02% sodium azide and 50% glycerol pH 7.3.

Aliquoting is unnecessary for -20°C storage

***** 20ul sizes contain 0.1% BSA**

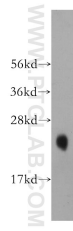
For technical support and original validation data for this product please contact:

T: 1 (888) 4PTGLAB (1-888-478-4522) (toll free in USA), or 1(312) 455-8498 (outside USA)

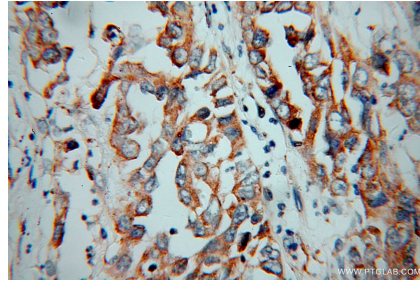
E: proteintech@ptglab.com
W: ptglab.com

This product is exclusively available under Proteintech Group brand and is not available to purchase from any other manufacturer.

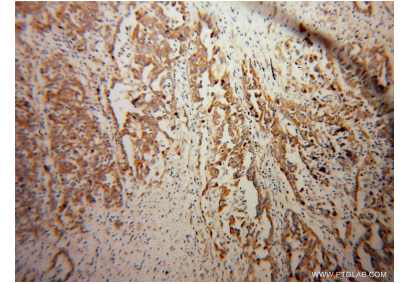
Selected Validation Data



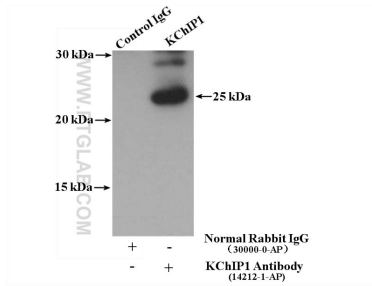
human cerebellum tissue were subjected to SDS PAGE followed by western blot with 14212-1-AP (KChIP1 antibody) at dilution of 1:500 incubated at room temperature for 1.5 hours.



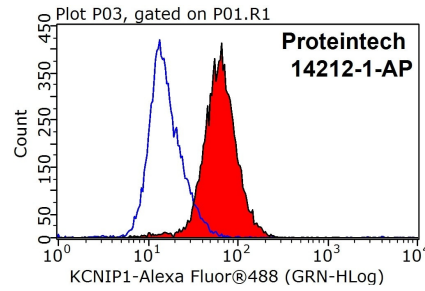
Immunohistochemical analysis of paraffin-embedded human pancreas cancer using 14212-1-AP (KChIP1 antibody) at dilution of 1:100 (under 40x lens).



Immunohistochemical analysis of paraffin-embedded human pancreas cancer using 14212-1-AP (KChIP1 antibody) at dilution of 1:100 (under 10x lens).



IP result of anti-KChIP1 (IP:14212-1-AP, 4ug; Detection:14212-1-AP 1:300) with fetal human brain tissue lysate 3500 ug.



1×10^6 HepG2 cells were stained with 0.2ug KChIP1 antibody (14212-1-AP, red) and control antibody (blue). Fixed with 90% MeOH blocked with 3% BSA (30 min). Alexa Fluor 488-conjugated AffiniPure Goat Anti-Rabbit IgG(H+L) with dilution 1:1000.