

For Research Use Only

KChIP1 Polyclonal antibody, PBS Only

Catalog Number: 14212-1-PBS



Basic Information

Catalog Number:

14212-1-PBS

Size:

100ug , Concentration: 1 mg/ml by Nanodrop;

Source:

Rabbit

Isotype:

IgG

Immunogen Catalog Number:

AG5432

GenBank Accession Number:

BC050375

GeneID (NCBI):

30820

UNIPROT ID:

Q9NZI2

Full Name:

Kv channel interacting protein 1

Calculated MW:

227 aa, 27 kDa

Observed MW:

25 kDa

Purification Method:

Antigen affinity purification

Applications

Tested Applications:

WB, IHC, FC (Intra), IP, Indirect ELISA

Species Specificity:

human

Background Information

Human K(v) channel interacting protein 1 (KCHIP1) is a new member of the neural calcium binding protein superfamily. Members of the KCNIP family are small calcium binding proteins. They all have EF-hand-like domains, and differ from each other in the N-terminus. They are integral subunit components of native Kv4 channel complexes. They may regulate A-type currents, and hence neuronal excitability, in response to changes in intracellular calcium. KCHIP1 is a neuronal calcium sensor protein that is predominantly expressed at GABAergic synapses and it has been related with modulation of K(+) channels, GABAergic transmission and cell death.

Storage

Storage:

Store at -80°C.

Storage Buffer:

PBS only

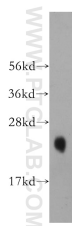
For technical support and original validation data for this product please contact:

T: 1 (888) 4PTGLAB (1-888-478-4522) (toll free in USA), or 1(312) 455-8498 (outside USA)

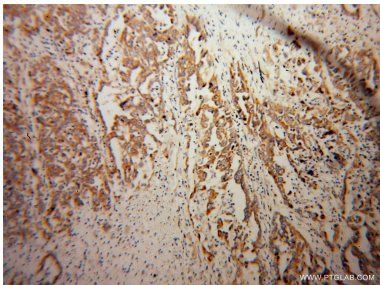
E: proteintech@ptglab.com
W: ptglab.com

This product is exclusively available under Proteintech Group brand and is not available to purchase from any other manufacturer.

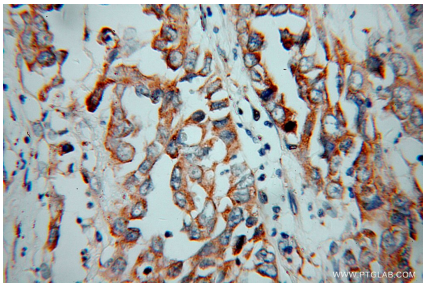
Selected Validation Data



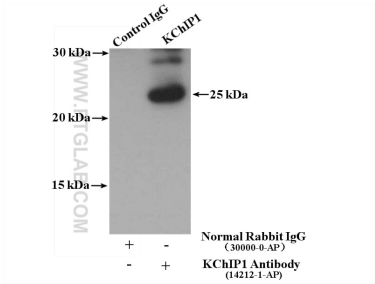
human cerebellum tissue were subjected to SDS PAGE followed by western blot with 14212-1-AP (KChIP1 antibody) at dilution of 1:500 incubated at room temperature for 1.5 hours. This data was developed using the same antibody clone with 14212-1-PBS in a different storage buffer formulation.



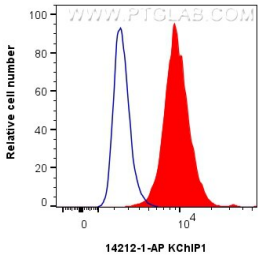
Immunohistochemical analysis of paraffin-embedded human pancreas cancer using 14212-1-AP (KChIP1 antibody) at dilution of 1:100 (under 10x lens). This data was developed using the same antibody clone with 14212-1-PBS in a different storage buffer formulation.



Immunohistochemical analysis of paraffin-embedded human pancreas cancer using 14212-1-AP (KChIP1 antibody) at dilution of 1:100 (under 40x lens). This data was developed using the same antibody clone with 14212-1-PBS in a different storage buffer formulation.



IP result of anti-KChIP1 (IP:14212-1-AP, 4ug; Detection:14212-1-AP 1:300) with fetal human brain tissue lysate 3500 ug. This data was developed using the same antibody clone with 14212-1-PBS in a different storage buffer formulation.



1x10⁶ HepG2 cells were intracellularly stained with 0.25 ug KChIP1 Polyclonal antibody (14212-1-AP) and CoraLite® 488-Conjugated Goat Anti-Rabbit IgG(H+L) (SA00013-2)(red), or 0.25 ug Isotype Control (blue). Cells were fixed with 4% PFA and permeabilized with Flow Cytometry Perm Buffer (PF00011-C). This data was developed using the same antibody clone with 14212-1-PBS in a different storage buffer formulation.