

For Research Use Only

Cytohesin 1 Polyclonal antibody

Catalog Number: 14217-1-AP

1 Publications



Basic Information

Catalog Number:

14217-1-AP

Size:

150ul , Concentration: 260 ug/ml by Nanodrop and 233 ug/ml by Bradford method using BSA as the standard;

Source:

Rabbit

Isotype:

IgG

Immunogen Catalog Number:

AG5455

GenBank Accession Number:

BC050452

GeneID (NCBI):

9267

UNIPROT ID:

Q15438

Full Name:

cytohesin 1

Calculated MW:

47 kDa

Observed MW:

47 kDa

Purification Method:

Antigen affinity purification

Recommended Dilutions:

WB 1:500-1:1000

Applications

Tested Applications:

WB, ELISA

Species Specificity:

human

Cited Species:

human

Positive Controls:

WB : Jurkat cells, Raji cells

Notable Publications

Author	Pubmed ID	Journal	Application
James W Clancy	31235936	Nat Cell Biol	

Storage

Storage:

Store at -20°C. Stable for one year after shipment.

Storage Buffer:

PBS with 0.02% sodium azide and 50% glycerol pH 7.3.

Aliquoting is unnecessary for -20°C storage

*** 20ul sizes contain 0.1% BSA

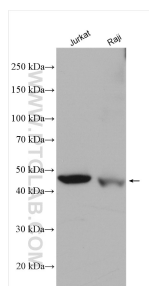
For technical support and original validation data for this product please contact:

T: 1 (888) 4PTGLAB (1-888-478-4522) (toll free in USA), or 1(312) 455-8498 (outside USA)

E: proteintech@ptglab.com
W: ptglab.com

This product is exclusively available under Proteintech Group brand and is not available to purchase from any other manufacturer.

Selected Validation Data



Various lysates were subjected to SDS PAGE followed by western blot with 14217-1-AP (Cytohesin 1 antibody) at dilution of 1:600 incubated at room temperature for 1.5 hours.