

For Research Use Only

# MPI Polyclonal antibody

Catalog Number: 14234-1-AP

Featured Product

1 Publications



## Basic Information

<b>Catalog Number:</b> 14234-1-AP	<b>GenBank Accession Number:</b> BC046357	<b>Purification Method:</b> Antigen affinity purification
<b>Size:</b> 150ul , Concentration: 700 µg/ml by Nanodrop;	<b>GeneID (NCBI):</b> 4351	<b>Recommended Dilutions:</b> WB 1:2000-1:10000 IP 0.5-4.0 ug for IP and 1:500-1:2000 for WB
<b>Source:</b> Rabbit	<b>Full Name:</b> mannose phosphate isomerase	<b>Calculated MW:</b> 47 kDa
<b>Isotype:</b> IgG	<b>Observed MW:</b> 40-47 kDa	<b>Immunogen Catalog Number:</b> AG5475

## Applications

<b>Tested Applications:</b> IF, IP, WB, ELISA	<b>Positive Controls:</b> WB : mouse brain tissue, human brain tissue, rat brain tissue IP : mouse brain tissue, IF : NIH/3T3 cells,
<b>Cited Applications:</b> WB	
<b>Species Specificity:</b> human, mouse, rat	
<b>Cited Species:</b> human	

## Background Information

MPI(mannose-6-phosphate isomerase) is also named as PMI1 and belongs to the mannose-6-phosphate isomerase type 1 family. It is a zinc metalloenzyme that catalyzes the reversible isomerization of mannose-6-phosphate and fructose-6-phosphate. MPI plays a critical role in maintaining the supply of D-mannose derivatives, which are required for most glycosylation reactions. This protein has 2 isoforms produced by alternative splicing.

## Notable Publications

Author	Pubmed ID	Journal	Application
Pablo Sierra Gonzalez	30464341	Nature	WB

## Storage

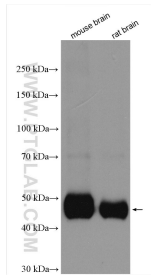
**Storage:**  
Store at -20°C. Stable for one year after shipment.  
**Storage Buffer:**  
PBS with 0.02% sodium azide and 50% glycerol pH 7.3.  
Aliquoting is unnecessary for -20°C storage

\*\*\* 20ul sizes contain 0.1% BSA

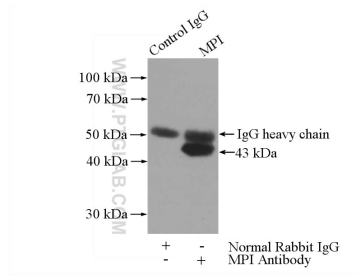
For technical support and original validation data for this product please contact:  
T: 1 (888) 4PTGLAB (1-888-478-4522) (toll free in USA), or 1(312) 455-8498 (outside USA)  
E: proteintech@ptglab.com  
W: ptglab.com

This product is exclusively available under Proteintech Group brand and is not available to purchase from any other manufacturer.

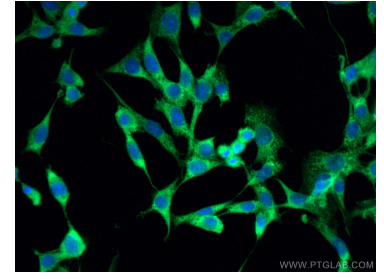
## Selected Validation Data



Various lysates were subjected to SDS PAGE followed by western blot with 14234-1-AP (MPI antibody) at dilution of 1:5000 incubated at room temperature for 1.5 hours.



IP Result of anti-MPI (IP:14234-1-AP, 4ug; Detection:14234-1-AP 1:1000) with mouse brain tissue lysate 4000ug.



Immunofluorescent analysis of (-20°C Ethanol) fixed NIH/3T3 cells using MPI antibody (14234-1-AP) at dilution of 1:400 and CoraLite®488-Conjugated AffiniPure Goat Anti-Rabbit IgG(H+L).