

For Research Use Only

# DUSP16 Polyclonal antibody

Catalog Number: 14237-1-AP

4 Publications



## Basic Information

### Catalog Number:

14237-1-AP

### Size:

150ul, Concentration: 500 ug/ml by Nanodrop and 333 ug/ml by Bradford method using BSA as the standard;

### Source:

Rabbit

### Isotype:

IgG

### Immunogen Catalog Number:

AG5479

### GenBank Accession Number:

BC042101

### GeneID (NCBI):

80824

### UNIPROT ID:

Q9BY84

### Full Name:

dual specificity phosphatase 16

### Calculated MW:

73 kDa

### Observed MW:

70 kDa

### Purification Method:

Antigen affinity purification

### Recommended Dilutions:

WB 1:500-1:1000

IHC 1:50-1:500

## Applications

### Tested Applications:

WB, IHC, ELISA

### Cited Applications:

WB, IHC

### Species Specificity:

human, mouse, rat

### Cited Species:

human, mouse

**Note-IHC: suggested antigen retrieval with TE buffer pH 9.0; (\*) Alternatively, antigen retrieval may be performed with citrate buffer pH 6.0**

### Positive Controls:

**WB:** PC-12 cells, COLO 320 cells, HeLa cells, mouse brain tissue

**IHC:** human colon tissue, human breast cancer tissue

## Background Information

DUSP16, also known as MKP-7, is a mitogen-activated protein kinase phosphatase that is a member of the dual specificity protein phosphatase subfamily. DUSP16 dephosphorylates JUN kinases (JNKs) specifically and thereby regulates T-cell differentiation, which can be responsible for the pathogenesis of Burkitt's lymphoma and cerebral ischemia. DUSP16 was also found to induce the expression of VCAM-1 through the suppression of JNK signaling.

## Notable Publications

Author	Pubmed ID	Journal	Application
Ze-Qing Pu	34088892	Cell Death Discov	WB
Ya-Min Hou	38583797	J Mol Cell Cardiol	IHC
Atsushi Enomoto	38565204	Int J Hyperthermia	WB

## Storage

### Storage:

Store at -20°C. Stable for one year after shipment.

### Storage Buffer:

PBS with 0.02% sodium azide and 50% glycerol pH 7.3.

Aliquoting is unnecessary for -20°C storage

\*\*\* 20ul sizes contain 0.1% BSA

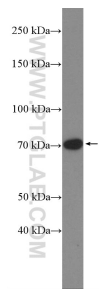
For technical support and original validation data for this product please contact:

T: 1 (888) 4PTGLAB (1-888-478-4522) (toll free in USA), or 1(312) 455-8498 (outside USA)

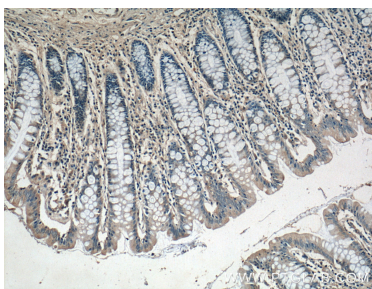
E: [proteintech@ptglab.com](mailto:proteintech@ptglab.com)  
W: [ptglab.com](http://ptglab.com)

This product is exclusively available under Proteintech Group brand and is not available to purchase from any other manufacturer.

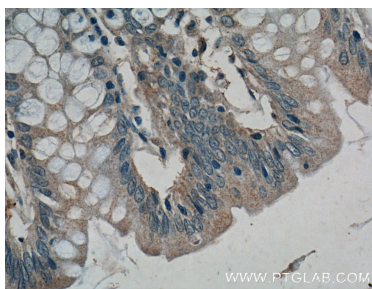
## Selected Validation Data



PC-12 cells were subjected to SDS PAGE followed by western blot with 14237-1-AP (DUSP16 Antibody) at dilution of 1:600 incubated at 4 degree celsius over night.



Immunohistochemical analysis of paraffin-embedded human colon tissue slide using 14237-1-AP (DUSP16 Antibody) at dilution of 1:200 (under 10x lens).



Immunohistochemical analysis of paraffin-embedded human colon tissue slide using 14237-1-AP (DUSP16 Antibody) at dilution of 1:200 (under 40x lens).