

For Research Use Only

# SUCLG2 Polyclonal antibody

Catalog Number: 14240-1-AP

Featured Product

5 Publications



## Basic Information

### Catalog Number:

14240-1-AP

### Size:

150ul, Concentration: 900 ug/ml by Nanodrop;

### Source:

Rabbit

### Isotype:

IgG

### Immunogen Catalog Number:

AG5495

### GenBank Accession Number:

BC047024

### GeneID (NCBI):

8801

### UNIPROT ID:

Q96I99

### Full Name:

succinate-CoA ligase, GDP-forming, beta subunit

### Calculated MW:

47 kDa

### Observed MW:

47 kDa

### Purification Method:

Antigen affinity purification

### Recommended Dilutions:

WB 1:5000-1:50000

IP 0.5-4.0 ug for 1.0-3.0 mg of total protein lysate

IHC 1:250-1:1000

## Applications

### Tested Applications:

WB, IP, IHC, ELISA

### Cited Applications:

WB, IHC, IF, IP

### Species Specificity:

human, mouse, rat

### Cited Species:

human, rat

**Note-IHC: suggested antigen retrieval with TE buffer pH 9.0; (\*) Alternatively, antigen retrieval may be performed with citrate buffer pH 6.0**

### Positive Controls:

**WB**: COLO 320 cells, HepG2 cells, mouse liver tissue, rat liver tissue

**IP**: mouse kidney tissue,

**IHC**: human colon cancer tissue, human gliomas tissue

## Background Information

SUCLG2, encodes a GTP-specific beta subunit of succinyl-CoA synthetase. Succinyl-CoA synthetase catalyzes the reversible reaction involving the formation of succinyl-CoA and succinate. The deficiency of SUCLG2 represents an encephalomyopathic form of mtDNA depletion syndromes (PMID:30470562). Mutated SUCLG1 causes mislocalization of SUCLG2 protein, morphological alterations of mitochondria and an early-onset severe neurometabolic disorder. SUCLG2 is mainly expressed in liver, kidney, heart (PMID: 9765291).

## Notable Publications

Author	Pubmed ID	Journal	Application
Susumu Kohno	32694611	Oncogene	WB
Wenbin Liu	39643219	Biochim Biophys Acta Mol Basis Dis	WB
Tong Wu	39037181	Arthritis Rheumatol	WB

## Storage

### Storage:

Store at -20°C. Stable for one year after shipment.

### Storage Buffer:

PBS with 0.02% sodium azide and 50% glycerol pH 7.3.

Aliquoting is unnecessary for -20°C storage

\*\*\* 20ul sizes contain 0.1% BSA

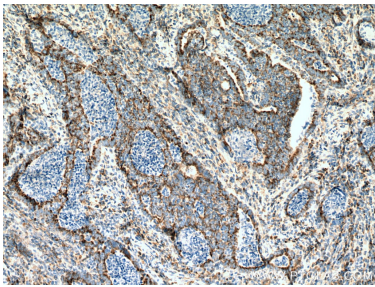
For technical support and original validation data for this product please contact:

T: 1 (888) 4PTGLAB (1-888-478-4522) (toll free in USA), or 1(312) 455-8498 (outside USA)

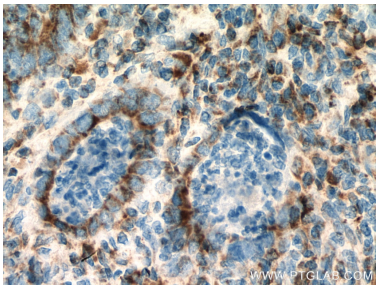
E: proteintech@ptglab.com  
W: ptglab.com

This product is exclusively available under Proteintech Group brand and is not available to purchase from any other manufacturer.

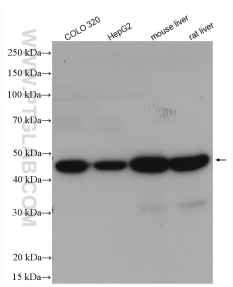
Selected Validation Data



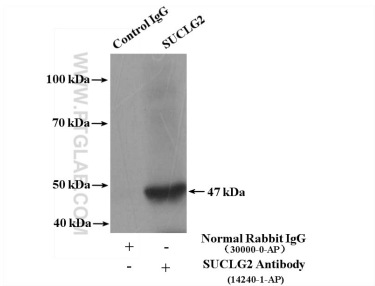
Immunohistochemical analysis of paraffin-embedded human colon cancer tissue slide using 14240-1-AP (SUCLG2 antibody) at dilution of 1:500 (under 10x lens). Heat mediated antigen retrieval with Tris-EDTA buffer (pH 9.0).



Immunohistochemical analysis of paraffin-embedded human colon cancer tissue slide using 14240-1-AP (SUCLG2 antibody) at dilution of 1:500 (under 40x lens). Heat mediated antigen retrieval with Tris-EDTA buffer (pH 9.0).



Various lysates were subjected to SDS PAGE followed by western blot with 14240-1-AP (SUCLG2 antibody) at dilution of 1:15000 incubated at room temperature for 1.5 hours.



IP result of anti-SUCLG2 (IP:14240-1-AP, 4ug; Detection:14240-1-AP 1:600) with mouse kidney tissue lysate 4800ug.