

For Research Use Only

# GCLM Polyclonal antibody

Catalog Number: 14241-1-AP

Featured Product

146 Publications



## Basic Information

**Catalog Number:**

14241-1-AP

**Size:**

150ul, Concentration: 550 ug/ml by Nanodrop;

**Source:**

Rabbit

**Isotype:**

IgG

**Immunogen Catalog Number:**

AG5497

**GenBank Accession Number:**

BC041809

**GeneID (NCBI):**

2730

**UNIPROT ID:**

P48507

**Full Name:**

glutamate-cysteine ligase, modifier subunit

**Calculated MW:**

31 kDa

**Observed MW:**

31 kDa

**Purification Method:**

Antigen affinity purification

**Recommended Dilutions:**

WB 1:2000-1:10000

IP 0.5-4.0 ug for 1.0-3.0 mg of total protein lysate

IHC 1:400-1:1600

IF/ICC 1:50-1:500

## Applications

**Tested Applications:**

WB, IHC, IF/ICC, FC (Intra), IP, ELISA

**Cited Applications:**

WB, IHC, IF

**Species Specificity:**

human, mouse, rat

**Cited Species:**

human, mouse, rat, goat

**Note-IHC: suggested antigen retrieval with TE buffer pH 9.0; (\*) Alternatively, antigen retrieval may be performed with citrate buffer pH 6.0**

**Positive Controls:**

WB: A431 cells, HeLa cells, L02 cells, mouse liver tissue, rat liver tissue, HepG2 cells

IP: A431 cells,

IHC: human liver cancer tissue, human skeletal muscle tissue

IF/ICC: HepG2 cells,

## Background Information

GCLM (Glutamate-cysteine ligase regulatory subunit) is also named as GLCLR and belongs to the aldo/keto reductase family. It catalyzes the first step of GSH synthesis and is involved in gamma-glutamyl cycle. GCLM is implicated in some forms of hemolytic anemia.

## Notable Publications

Author	Pubmed ID	Journal	Application
Lin-Tao Xu	34601084	J Ethnopharmacol	WB
Jiawen Zheng	31569771	Mar Drugs	WB
Jie Deng	34565300	Bioengineered	WB

## Storage

**Storage:**

Store at -20°C. Stable for one year after shipment.

**Storage Buffer:**

PBS with 0.02% sodium azide and 50% glycerol pH 7.3.

Aliquoting is unnecessary for -20°C storage

\*\*\* 20ul sizes contain 0.1% BSA

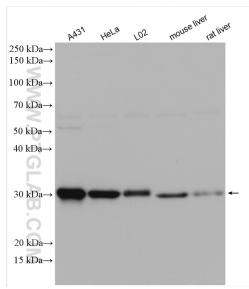
For technical support and original validation data for this product please contact:

T: 1 (888) 4PTGLAB (1-888-478-4522) (toll free in USA), or 1(312) 455-8498 (outside USA)

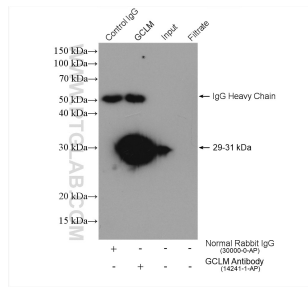
E: proteintech@ptglab.com  
W: ptglab.com

This product is exclusively available under Proteintech Group brand and is not available to purchase from any other manufacturer.

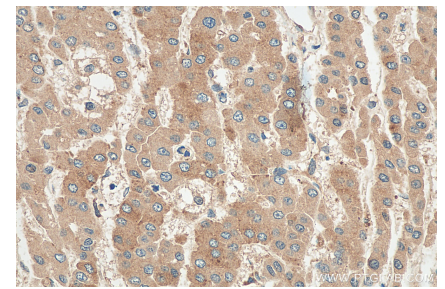
## Selected Validation Data



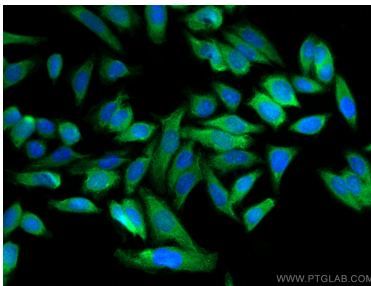
Various lysates were subjected to SDS PAGE followed by western blot with 14241-1-AP (GCLM antibody) at dilution of 1:5000 incubated at room temperature for 1.5 hours.



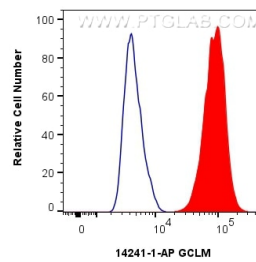
IP result of anti-GCLM (IP:14241-1-AP, 4ug; Detection:14241-1-AP 1:2000) with A431 cells lysate 1000 ug.



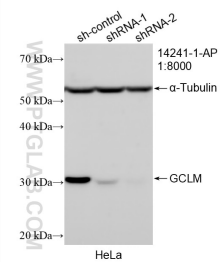
Immunohistochemical analysis of paraffin-embedded human liver cancer tissue slide using 14241-1-AP (GCLM antibody) at dilution of 1:800 (under 40x lens). Heat mediated antigen retrieval with Tris-EDTA buffer (pH 9.0).



Immunofluorescent analysis of (-20°C Methanol) fixed HepG2 cells using GCLM antibody (14241-1-AP) at dilution of 1:200 and CoraLite@488-Conjugated AffiniPure Goat Anti-Rabbit IgG(H+L).



$1 \times 10^6$  HepG2 cells were intracellularly stained with 0.25 ug GCLM Polyclonal antibody (14241-1-AP) and CoraLite@488-Conjugated Goat Anti-Rabbit IgG(H+L) (SA00013-2)(red), or 0.25 ug Rabbit IgG control Rabbit PolyAb (30000-0-AP) (blue). Cells were fixed with 4% PFA and permeabilized with Flow Cytometry Perm Buffer (PF00011-C).



WB result of GCLM antibody (14241-1-AP; 1:8000; incubated at room temperature for 1.5 hours) with sh-Control and sh-GCLM transfected HeLa cells.