

For Research Use Only

MMP19 Polyclonal antibody

Catalog Number: 14244-1-AP

7 Publications



Basic Information

Catalog Number:

14244-1-AP

Size:

150ul, Concentration: 350 ug/ml by Nanodrop and 300 ug/ml by Bradford method using BSA as the standard;

Source:

Rabbit

Isotype:

IgG

Immunogen Catalog Number:

AG5501

GenBank Accession Number:

BC050368

GeneID (NCBI):

4327

UNIPROT ID:

Q99542

Full Name:

matrix metalloproteinase 19

Calculated MW:

57 kDa

Observed MW:

57-60 kDa

Purification Method:

Antigen affinity purification

Recommended Dilutions:

WB 1:500-1:2000

IP 0.5-4.0 ug for 1.0-3.0 mg of total protein lysate

IHC 1:20-1:200

IF/ICC 1:50-1:500

Applications

Tested Applications:

WB, IHC, IF/ICC, IP, ELISA

Cited Applications:

WB, IHC

Species Specificity:

human

Cited Species:

human, mouse, rat

Note-IHC: suggested antigen retrieval with TE buffer pH 9.0; (*) Alternatively, antigen retrieval may be performed with citrate buffer pH 6.0

Positive Controls:

WB : SH-SY5Y cells, human placenta tissue

IP : human placenta tissue,

IHC : human liver cancer tissue,

IF/ICC : SH-SY5Y cells,

Background Information

MMP19(matrix metalloproteinase-19) has the capacity to degrade several basement membrane proteins such as type IV collagen, laminin, tenascin C, and nidogen. It is expressed by microvascular endothelial cells in vitro as well as by capillaries in the inflamed synovial membrane, whereas its expression is absent in quiescent macrovascular endothelial cells of large arteries and veins. And it is also detected in capillaries of normal mammary tissue, benign mammary carcinomas and in skin capillaries(PMID:15241558).

Notable Publications

Author	Pubmed ID	Journal	Application
Fangfang Ge	36386128	Front Pharmacol	WB
Haiyang Shu	34708132	J Immunol Res	WB
Zong-Kun Chang	29323744	J Cell Biochem	WB,IHC

Storage

Storage:

Store at -20°C. Stable for one year after shipment.

Storage Buffer:

PBS with 0.02% sodium azide and 50% glycerol, pH7.3

Aliquoting is unnecessary for -20°C storage

*** 20ul sizes contain 0.1% BSA

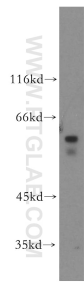
For technical support and original validation data for this product please contact:

T: 1 (888) 4PTGLAB (1-888-478-4522) (toll free in USA), or 1(312) 455-8498 (outside USA)

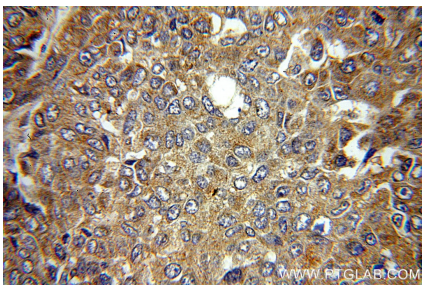
E: proteintech@ptglab.com
W: ptglab.com

This product is exclusively available under Proteintech Group brand and is not available to purchase from any other manufacturer.

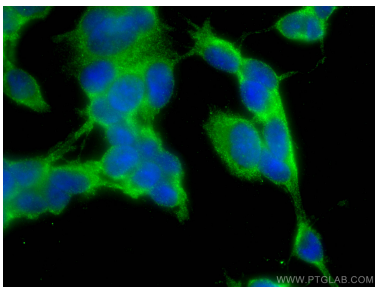
Selected Validation Data



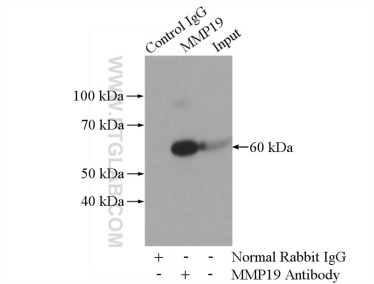
SH-SY5Y cells were subjected to SDS PAGE followed by western blot with 14244-1-AP (MMP19 antibody) at dilution of 1:300 incubated at room temperature for 1.5 hours.



Immunohistochemical analysis of paraffin-embedded human liver cancer using 14244-1-AP (MMP19 antibody) at dilution of 1:50 (under 40x lens).



Immunofluorescent analysis of (-20°C Ethanol) fixed SH-SY5Y cells using MMP19 antibody (14244-1-AP) at dilution of 1:200 and CoraLite®488-Conjugated Goat Anti-Rabbit IgG(H+L).



IP result of anti-MMP19 (IP:14244-1-AP, 4ug; Detection:14244-1-AP 1:500) with human placenta tissue lysate 1520ug.