

For Research Use Only

BIN2 Polyclonal antibody

Catalog Number: 14245-1-AP

Featured Product

1 Publications



Basic Information

Catalog Number:

14245-1-AP

Size:

150ul , Concentration: 260 ug/ml by Nanodrop and 200 ug/ml by Bradford method using BSA as the standard;

Source:

Rabbit

Isotype:

IgG

Immunogen Catalog Number:

AG5502

GenBank Accession Number:

BC047686

GeneID (NCBI):

51411

UNIPROT ID:

Q9UBW5

Full Name:

bridging integrator 2

Calculated MW:

62 kDa

Observed MW:

80-90 kDa

Purification Method:

Antigen affinity purification

Recommended Dilutions:

WB 1:2000-1:14000

IP 0.5-4.0 ug for 1.0-3.0 mg of total protein lysate

IHC 1:20-1:200

Applications

Tested Applications:

WB, IP, IHC, ELISA

Cited Applications:

WB, IP

Species Specificity:

human, mouse

Cited Species:

mouse

Note-IHC: suggested antigen retrieval with TE buffer pH 9.0; (*) Alternatively, antigen retrieval may be performed with citrate buffer pH 6.0

Positive Controls:

WB : Jurkat cells, U-937 cells

IP : Jurkat cells,

IHC : human spleen tissue, mouse heart tissue, human heart tissue, human skin tissue, human lung tissue, human ovary tissue

Background Information

BAR proteins, which are characterized by a common N-terminal BAR domain, are a family of adaptor proteins implicated in a diverse set of cellular processes. BIN1 (bridging integrator 1) and BIN2 are BAR proteins. The human BIN2 gene is located at chromosome 4q22.1, and encodes a 565-amino acid protein with a predicted molecular weight of ~62 kDa. It shows preferential expression in hematopoietic tissues, with highest mRNA levels in spleen and peripheral blood leukocytes and also high levels in thymus, colon, and placenta. BIN2 has been shown to migrate with an apparent mobility of ~80 kDa, and interact with BIN1. (PMID: 10903846)

Notable Publications

Author	Pubmed ID	Journal	Application
Julia Volz	32750041	J Clin Invest	WB,IP

Storage

Storage:

Store at -20°C. Stable for one year after shipment.

Storage Buffer:

PBS with 0.02% sodium azide and 50% glycerol pH 7.3.

Aliquoting is unnecessary for -20°C storage

*** 20ul sizes contain 0.1% BSA

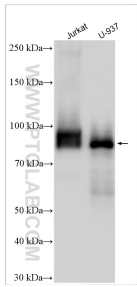
For technical support and original validation data for this product please contact:

T: 1 (888) 4PTGLAB (1-888-478-4522) (toll free in USA), or 1(312) 455-8498 (outside USA)

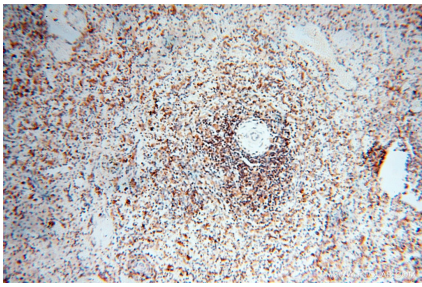
E: proteintech@ptglab.com
W: ptglab.com

This product is exclusively available under Proteintech Group brand and is not available to purchase from any other manufacturer.

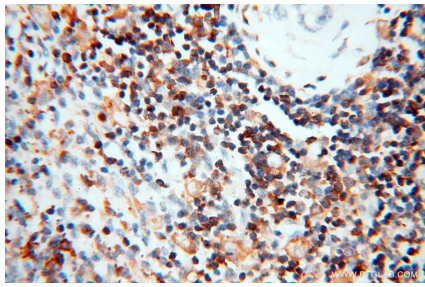
Selected Validation Data



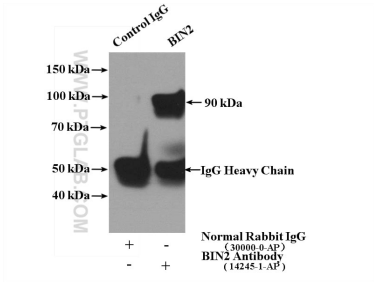
Various lysates were subjected to SDS PAGE followed by western blot with 14245-1-AP (BIN2 antibody) at dilution of 1:7000 incubated at room temperature for 1.5 hours.



Immunohistochemical analysis of paraffin-embedded human spleen using 14245-1-AP (BIN2 antibody) at dilution of 1:100 (under 10x lens).



Immunohistochemical analysis of paraffin-embedded human spleen using 14245-1-AP (BIN2 antibody) at dilution of 1:100 (under 40x lens).



IP result of anti-BIN2 (IP:14245-1-AP, 4ug; Detection:14245-1-AP 1:400) with Jurkat cells lysate 2000ug.