

For Research Use Only

TFCP2L1 Polyclonal antibody

Catalog Number: 14248-1-AP



Basic Information

Catalog Number: 14248-1-AP	GenBank Accession Number: BC064698	Purification Method: Antigen affinity purification
Size: 150ul , Concentration: 367 µg/ml by Nanodrop and 367 µg/ml by Bradford method using BSA as the standard;	GeneID (NCBI): 29842	Recommended Dilutions: WB 1:500-1:1000
Source: Rabbit	Full Name: transcription factor CP2-like 1	
Isotype: IgG	Calculated MW: 55 kDa	
Immunogen Catalog Number: AG5520	Observed MW: 55 kDa	

Applications

Tested Applications: WB, ELISA	Positive Controls: WB : human placenta tissue,
Species Specificity: human	

Background Information

Storage

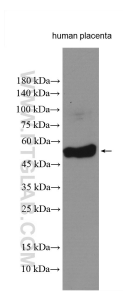
Storage:
Store at -20°C. Stable for one year after shipment.
Storage Buffer:
PBS with 0.02% sodium azide and 50% glycerol pH 7.3.
Aliquoting is unnecessary for -20°C storage

*** 20ul sizes contain 0.1% BSA

For technical support and original validation data for this product please contact:
T: 1 (888) 4PTGLAB (1-888-478-4522) (toll free in USA), or 1(312) 455-8498 (outside USA) E: proteintech@ptglab.com
W: ptglab.com

This product is exclusively available under Proteintech Group brand and is not available to purchase from any other manufacturer.

Selected Validation Data



Human placenta tissue were subjected to SDS PAGE followed by western blot with 14248-1-AP (TFCP2L1 antibody) at dilution of 1:600 incubated at room temperature for 1.5 hours.