

For Research Use Only

CENPC Polyclonal antibody

Catalog Number: 14250-1-AP



Basic Information

Catalog Number:

14250-1-AP

Size:

150ul , Concentration: 450 ug/ml by Nanodrop and 353 ug/ml by Bradford method using BSA as the standard;

Source:

Rabbit

Isotype:

IgG

Immunogen Catalog Number:

AG5523

GenBank Accession Number:

BC041117

GeneID (NCBI):

1060

UNIPROT ID:

Q03188

Full Name:

centromere protein C 1

Calculated MW:

107 kDa

Observed MW:

140 kDa

Purification Method:

Antigen affinity purification

Recommended Dilutions:

WB 1:500-1:1000

Applications

Tested Applications:

WB, ELISA

Species Specificity:

human, mouse

Positive Controls:

WB : HeLa cells, A431 cells, Jurkat cells

Storage

Storage:

Store at -20°C. Stable for one year after shipment.

Storage Buffer:

PBS with 0.02% sodium azide and 50% glycerol pH 7.3.

Aliquoting is unnecessary for -20°C storage

*** 20ul sizes contain 0.1% BSA

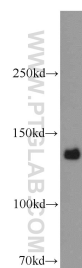
For technical support and original validation data for this product please contact:

T: 1 (888) 4PTGLAB (1-888-478-4522) (toll free in USA), or 1(312) 455-8498 (outside USA)

E: proteintech@ptglab.com
W: ptglab.com

This product is exclusively available under Proteintech Group brand and is not available to purchase from any other manufacturer.

Selected Validation Data



HeLa cells were subjected to SDS PAGE followed by western blot with 14250-1-AP (CENPC antibody) at dilution of 1:800 incubated at room temperature for 1.5 hours.