

For Research Use Only

# MTP18 Polyclonal antibody

Catalog Number: 14257-1-AP

Featured Product

5 Publications



## Basic Information

Catalog Number:  
14257-1-AP

Size:  
150ul, Concentration: 300 µg/ml by  
Nanodrop and 220 µg/ml by Bradford  
method using BSA as the standard;

Source:  
Rabbit

Isotype:  
IgG

Immunogen Catalog Number:  
AG5530

GenBank Accession Number:  
BC038831

GeneID (NCBI):  
51537

Full Name:  
mitochondrial protein 18 kDa

Calculated MW:  
18 kDa

Observed MW:  
16-18 kDa

Purification Method:  
Antigen affinity purification

Recommended Dilutions:  
WB 1:500-1:1000  
IP 0.5-4.0 ug for IP and 1:500-1:1000  
for WB  
IHC 1:100-1:400

## Applications

Tested Applications:  
IHC, IP, WB, ELISA

Cited Applications:  
IHC, WB

Species Specificity:  
human, mouse, rat

Cited Species:  
human, mouse

**Note-IHC: suggested antigen retrieval with  
TE buffer pH 9.0; (\*) Alternatively, antigen  
retrieval may be performed with citrate  
buffer pH 6.0**

Positive Controls:

WB: mouse skeletal muscle tissue, mouse heart tissue

IP: mouse heart tissue,

IHC: human heart tissue,

## Background Information

### Notable Publications

Author	Pubmed ID	Journal	Application
Yu Zhang	30237394	Cell Death Dis	IHC
Hidenori Otera	26903540	J Cell Biol	WB
Tingying Xiao	31814213	Cell Biol Int	WB

## Storage

Storage:

Store at -20°C. Stable for one year after shipment.

Storage Buffer:

PBS with 0.02% sodium azide and 50% glycerol pH 7.3.

Aliquoting is unnecessary for -20°C storage

\*\*\* 20ul sizes contain 0.1% BSA

For technical support and original validation data for this product please contact:

T: 1 (888) 4PTGLAB (1-888-478-4522) (toll free  
in USA), or 1(312) 455-8498 (outside USA)

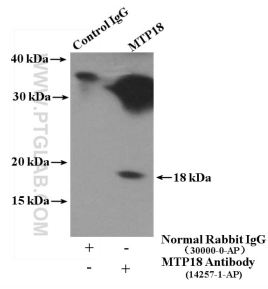
E: [proteintech@ptglab.com](mailto:proteintech@ptglab.com)  
W: [ptglab.com](http://ptglab.com)

This product is exclusively available under Proteintech Group brand and is not available to purchase from any other manufacturer.

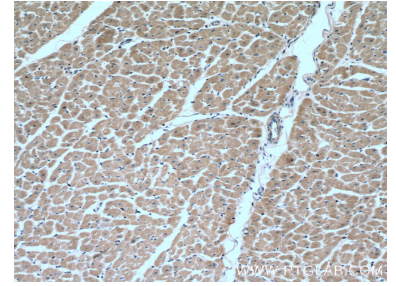
## Selected Validation Data



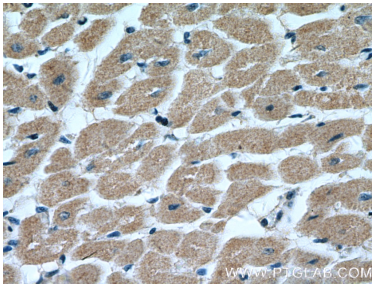
mouse skeletal muscle tissue were subjected to SDS PAGE followed by western blot with 14257-1-AP (MTP18 antibody) at dilution of 1:300 incubated at room temperature for 1.5 hours.



IP Result of anti-MTP18 (IP:14257-1-AP, 4ug; Detection:14257-1-AP 1:500) with mouse heart tissue lysate 4000ug.



Immunohistochemical analysis of paraffin-embedded human heart tissue slide using 14257-1-AP (MTP18 Antibody) at dilution of 1:200 (under 10x lens).



Immunohistochemical analysis of paraffin-embedded human heart tissue slide using 14257-1-AP (MTP18 Antibody) at dilution of 1:200 (under 40x lens).