

For Research Use Only

# PNPLA6 Polyclonal antibody

Catalog Number: 14261-1-AP **2 Publications**



## Basic Information

<b>Catalog Number:</b> 14261-1-AP	<b>GenBank Accession Number:</b> BC051768	<b>Purification Method:</b> Antigen affinity purification
<b>Size:</b> 150ul , Concentration: 350 µg/ml by Nanodrop and 313 µg/ml by Bradford method using BSA as the standard;	<b>GeneID (NCBI):</b> 10908	<b>Recommended Dilutions:</b> WB 1:500-1:1000 IF 1:10-1:100
<b>Source:</b> Rabbit	<b>Full Name:</b> patatin-like phospholipase domain containing 6	
<b>Isotype:</b> IgG	<b>Calculated MW:</b> 150 kDa	
<b>Immunogen Catalog Number:</b> AG5546	<b>Observed MW:</b> 150 kDa	

## Applications

<b>Tested Applications:</b> IF, IP, WB, ELISA	<b>Positive Controls:</b> WB : HEK-293 cells, SH-SY5Y cells IF : HepG2 cells, MCF-7 cells
<b>Cited Applications:</b> WB	
<b>Species Specificity:</b> human	
<b>Cited Species:</b> human	

## Background Information

PNPLA6(patatin-like phospholipase domain-containing protein 6) is also named as NTE(neuropathy target esterase) and belongs to the NTE family. It plays an important role in motor neuron development and implicated overexpression of BMP signaling(PMID:22996643). Defects in PNPLA6 are the cause of spastic paraplegia autosomal recessive type 39 (SPG39)(PMID:18313024). This protein has a glycosylation site that it can be glycosylated(PMID:9576844). It has 3 isoforms produced by alternative splicing.

## Notable Publications

Author	Pubmed ID	Journal	Application
Alexandre Luscher	31216233	Mol Biol Cell	
Ascano Manuel M Jr	23235829	Nature	WB

## Storage

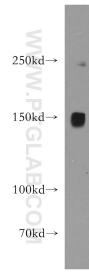
**Storage:**  
Store at -20°C. Stable for one year after shipment.  
**Storage Buffer:**  
PBS with 0.02% sodium azide and 50% glycerol pH 7.3.  
Aliquoting is unnecessary for -20°C storage

\*\*\* 20ul sizes contain 0.1% BSA

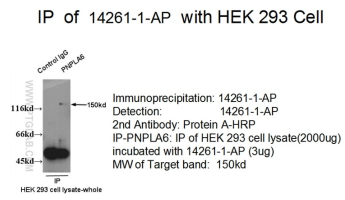
For technical support and original validation data for this product please contact:  
T: 1 (888) 4PTGLAB (1-888-478-4522) (toll free in USA), or 1(312) 455-8498 (outside USA)  
E: proteintech@ptglab.com  
W: ptglab.com

This product is exclusively available under Proteintech Group brand and is not available to purchase from any other manufacturer.

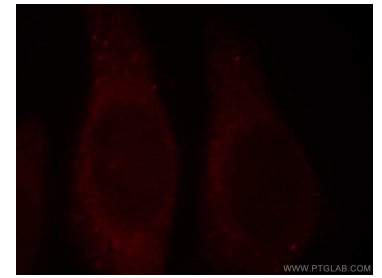
## Selected Validation Data



HEK-293 cells were subjected to SDS PAGE followed by western blot with 14261-1-AP (PNPLA6 antibody) at dilution of 1:500 incubated at room temperature for 1.5 hours.



IP result of anti-PNPLA6 (14261-1-AP) for IP and Detection) with HEK-293 cells.



Immunofluorescent analysis of HepG2 cells, using PNPLA6 antibody 14261-1-AP at 1:25 dilution and Rhodamine-labeled goat anti-rabbit IgG (red).