

For Research Use Only

VPS36 Polyclonal antibody

Catalog Number: 14262-1-AP **2 Publications**



Basic Information

Catalog Number: 14262-1-AP	GenBank Accession Number: BC050439	Purification Method: Antigen affinity purification
Size: 150ul , Concentration: 450 µg/ml by Nanodrop and 267 µg/ml by Bradford method using BSA as the standard;	GeneID (NCBI): 51028	Recommended Dilutions: WB 1:200-1:1000
Source: Rabbit	Full Name: vacuolar protein sorting 36 homolog (S. cerevisiae)	
Isotype: IgG	Calculated MW: 44 kDa	
Immunogen Catalog Number: AG5549	Observed MW: 43 kDa, 65 kDa	

Applications

Tested Applications: WB,ELISA	Positive Controls: WB : HL-60 cells,
Cited Applications: WB	
Species Specificity: human	
Cited Species: human	

Background Information

Notable Publications

Author	Pubmed ID	Journal	Application
Ying Li	28370415	J Neurosci Res	
Hui-Yung Song	30965672	Cells	WB

Storage

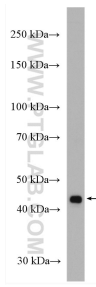
Storage:
Store at -20°C. Stable for one year after shipment.
Storage Buffer:
PBS with 0.02% sodium azide and 50% glycerol pH 7.3.
Aliquoting is unnecessary for -20°C storage

*** 20ul sizes contain 0.1% BSA

For technical support and original validation data for this product please contact:
T: 1 (888) 4PTGLAB (1-888-478-4522) (toll free in USA), or 1(312) 455-8498 (outside USA) E: proteintech@ptglab.com W: ptglab.com

This product is exclusively available under Proteintech Group brand and is not available to purchase from any other manufacturer.

Selected Validation Data



HL-60 cells were subjected to SDS PAGE followed by western blot with 14262-1-AP (VPS36 antibody) at dilution of 1:300 incubated at room temperature for 1.5 hours.