

For Research Use Only

CEBPE Polyclonal antibody

Catalog Number: 14271-1-AP **1 Publications**



Basic Information

Catalog Number: 14271-1-AP	GenBank Accession Number: BC035797	Purification Method: Antigen affinity purification
Size: 150ul , Concentration: 300 µg/ml by Nanodrop and 300 µg/ml by Bradford method using BSA as the standard;	GeneID (NCBI): 1053	Recommended Dilutions: WB 1:200-1:1000 IF 1:50-1:500
Source: Rabbit	Full Name: CCAAT/enhancer binding protein (C/EBP), epsilon	
Isotype: IgG	Calculated MW: 31 kDa	
Immunogen Catalog Number: AG5589	Observed MW: 32 kDa	

Applications

Tested Applications: IF, WB, ELISA	Positive Controls: WB : mouse liver tissue, U-937 cells IF : HepG2 cells,
Cited Applications: WB	
Species Specificity: human, mouse, rat	
Cited Species: human	

Background Information

Notable Publications

Author	Pubmed ID	Journal	Application
Jia-Yu Zhong	32483833	Ann N Y Acad Sci	WB

Storage

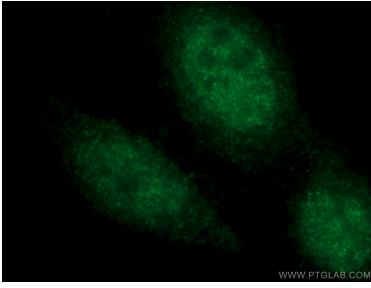
Storage:
Store at -20°C. Stable for one year after shipment.
Storage Buffer:
PBS with 0.02% sodium azide and 50% glycerol pH 7.3.
Aliquoting is unnecessary for -20°C storage

*** 20ul sizes contain 0.1% BSA

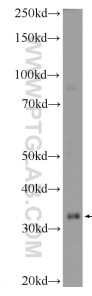
For technical support and original validation data for this product please contact:
T: 1 (888) 4PTGLAB (1-888-478-4522) (toll free in USA), or 1(312) 455-8498 (outside USA)
E: proteintech@ptglab.com
W: ptglab.com

This product is exclusively available under Proteintech Group brand and is not available to purchase from any other manufacturer.

Selected Validation Data



Immunofluorescent analysis of (4% PFA) fixed HepG2 cells using 14271-1-AP (CEBPE antibody) at dilution of 1:50 and Alexa Fluor 488-conjugated AffiniPure Goat Anti-Rabbit IgG(H+L).



mouse liver tissue were subjected to SDS PAGE followed by western blot with 14271-1-AP (CEBPE Antibody) at dilution of 1:300 incubated at room temperature for 1.5 hours.