

For Research Use Only

SRX1 Polyclonal antibody

Catalog Number: 14273-1-AP

Featured Product

32 Publications



Basic Information

Catalog Number:

14273-1-AP

Size:

150ul, Concentration: 1000 µg/ml by Nanodrop;

Source:

Rabbit

Isotype:

IgG

Immunogen Catalog Number:

AG5613

GenBank Accession Number:

BC047707

GeneID (NCBI):

140809

Full Name:

sulfiredoxin 1 homolog (S. cerevisiae)

Calculated MW:

14 kDa

Observed MW:

14 kDa

Purification Method:

Antigen affinity purification

Recommended Dilutions:

WB 1:200-1:1000

IP 0.5-4.0 µg for IP and 1:200-1:1000

for WB

IHC 1:20-1:200

Applications

Tested Applications:

IHC, IP, WB, ELISA

Cited Applications:

IF, IHC, WB

Species Specificity:

human, mouse

Cited Species:

human, rat, mouse

Note-IHC: suggested antigen retrieval with TE buffer pH 9.0; (*) Alternatively, antigen retrieval may be performed with citrate buffer pH 6.0

Positive Controls:

WB: A549 cells, mouse liver tissue, Transfected HEK-293 cells

IP: A549 cells,

IHC: human lung cancer tissue, human breast cancer tissue, human kidney tissue

Background Information

Notable Publications

Author	Pubmed ID	Journal	Application
Qian-Wen Rao	32955798	Cancer Med	WB, IHC
Ramon Martinez	33109619	J Pharmacol Exp Ther	WB
Soini Y Y	24189098	Pathol Res Pract	IHC

Storage

Storage:

Store at -20°C. Stable for one year after shipment.

Storage Buffer:

PBS with 0.02% sodium azide and 50% glycerol pH 7.3.

Aliquoting is unnecessary for -20°C storage

*** 20ul sizes contain 0.1% BSA

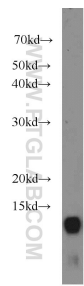
For technical support and original validation data for this product please contact:

T: 1 (888) 4PTGLAB (1-888-478-4522) (toll free in USA), or 1(312) 455-8498 (outside USA)

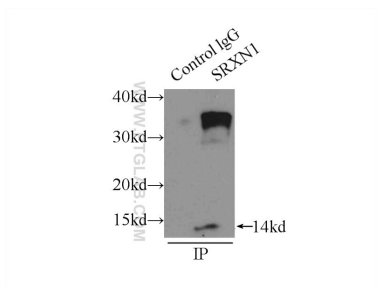
E: proteintech@ptglab.com
W: ptglab.com

This product is exclusively available under Proteintech Group brand and is not available to purchase from any other manufacturer.

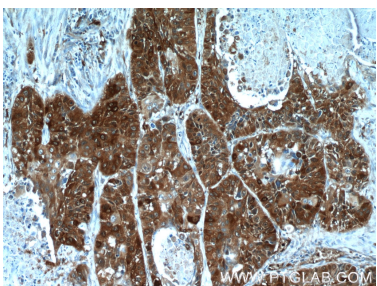
Selected Validation Data



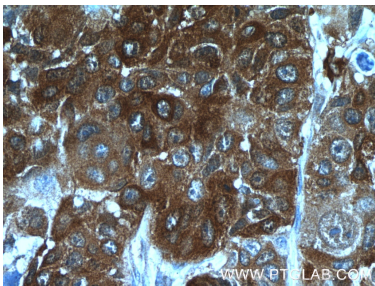
A549 cells were subjected to SDS PAGE followed by western blot with 14273-1-AP (SRX1 antibody) at dilution of 1:400 incubated at room temperature for 1.5 hours.



IP Result of anti-SRX1 (IP:14273-1-AP, 3ug; Detection:14273-1-AP 1:400) with A549 cells lysate 3300ug.



Immunohistochemical analysis of paraffin-embedded human lung cancer tissue slide using 14273-1-AP (SRX1 Antibody) at dilution of 1:50 (under 10x lens).



Immunohistochemical analysis of paraffin-embedded human lung cancer tissue slide using 14273-1-AP (SRX1 Antibody) at dilution of 1:50 (under 40x lens).