

For Research Use Only

SRX1 Polyclonal antibody, PBS Only

Catalog Number: 14273-1-PBS

Featured Product



Basic Information

Catalog Number:

14273-1-PBS

Size:

100ug, Concentration: 1 mg/ml by Nanodrop;

Source:

Rabbit

Isotype:

IgG

Immunogen Catalog Number:

AG5613

GenBank Accession Number:

BC047707

GeneID (NCBI):

140809

UNIPROT ID:

Q9BYNO

Full Name:

sulfiredoxin 1 homolog (S. cerevisiae)

Calculated MW:

14 kDa

Observed MW:

14 kDa

Purification Method:

Antigen affinity purification

Applications

Tested Applications:

WB, IHC, IP, Indirect ELISA

Species Specificity:

human, mouse

Storage

Storage:

Store at -80°C.

Storage Buffer:

PBS only, pH7.3

For technical support and original validation data for this product please contact:

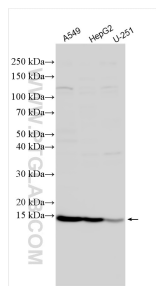
T: 1 (888) 4PTGLAB (1-888-478-4522) (toll free in USA), or 1(312) 455-8498 (outside USA)

E: proteintech@ptglab.com

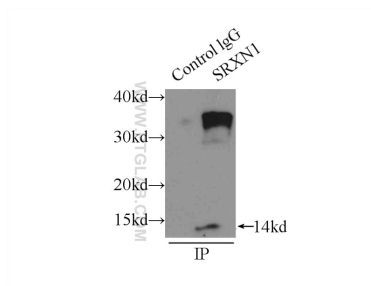
W: ptglab.com

This product is exclusively available under Proteintech Group brand and is not available to purchase from any other manufacturer.

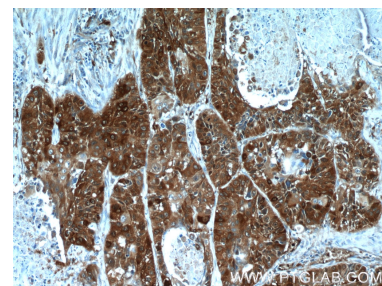
Selected Validation Data



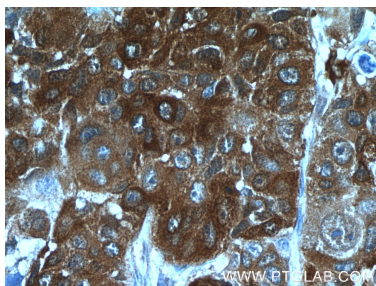
Various lysates were subjected to SDS PAGE followed by western blot with 14273-1-AP (SRX1 antibody) at dilution of 1:1500 incubated at room temperature for 1.5 hours. This data was developed using the same antibody clone with 14273-1-PBS in a different storage buffer formulation.



IP result of anti-SRX1 (IP:14273-1-AP, 3ug; Detection:14273-1-AP 1:400) with A549 cells lysate 3300ug. This data was developed using the same antibody clone with 14273-1-PBS in a different storage buffer formulation.



Immunohistochemical analysis of paraffin-embedded human lung cancer tissue slide using 14273-1-AP (SRX1 Antibody) at dilution of 1:50 (under 10x lens). This data was developed using the same antibody clone with 14273-1-PBS in a different storage buffer formulation.



Immunohistochemical analysis of paraffin-embedded human lung cancer tissue slide using 14273-1-AP (SRX1 Antibody) at dilution of 1:50 (under 40x lens). This data was developed using the same antibody clone with 14273-1-PBS in a different storage buffer formulation.