

For Research Use Only

# GFM1 Polyclonal antibody, PBS Only

Catalog Number: 14274-1-PBS



## Basic Information

<b>Catalog Number:</b> 14274-1-PBS	<b>GenBank Accession Number:</b> BC049210	<b>Purification Method:</b> Antigen affinity purification
<b>Size:</b> 100ug , Concentration: 1 mg/ml by Nanodrop;	<b>GeneID (NCBI):</b> 85476	
<b>Source:</b> Rabbit	<b>UNIPROT ID:</b> Q96RP9	
<b>Isotype:</b> IgG	<b>Full Name:</b> G elongation factor, mitochondrial 1	
<b>Immunogen Catalog Number:</b> AG5616	<b>Calculated MW:</b> 86 kDa	
	<b>Observed MW:</b> 85 kDa	

## Applications

**Tested Applications:**  
WB, IHC, IF/ICC, IP, Indirect ELISA

**Species Specificity:**  
human, mouse, rat

## Background Information

Different factors catalyze the three stages of protein translation: initiation, elongation, and termination. There are two translational systems in eukaryotes, one in the cytoplasm and the other in the mitochondria. In mitochondria, the elongation phase requires three elongation factors (EF): Tu (TUFM), Ts (TSFM), and G (GFM1)[PMID:19716793]. GFM1 catalyzes translocation during peptide elongation and mediates ribosomal disassembly during ribosome recycling in concert with the ribosomal recycling factor (RRF). [PMID:16487710]

## Storage

**Storage:**  
Store at -80°C.

**Storage Buffer:**  
PBS only, pH7.3

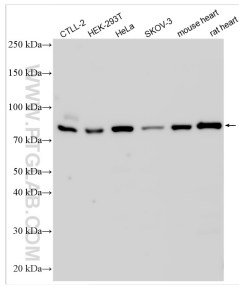
For technical support and original validation data for this product please contact:

T: 1 (888) 4PTGLAB (1-888-478-4522) (toll free in USA), or 1(312) 455-8498 (outside USA)

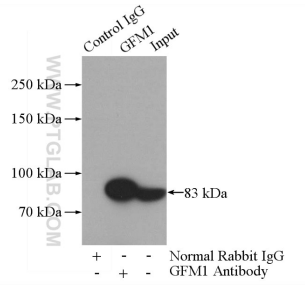
E: [proteintech@ptglab.com](mailto:proteintech@ptglab.com)  
W: [ptglab.com](http://ptglab.com)

**This product is exclusively available under Proteintech Group brand and is not available to purchase from any other manufacturer.**

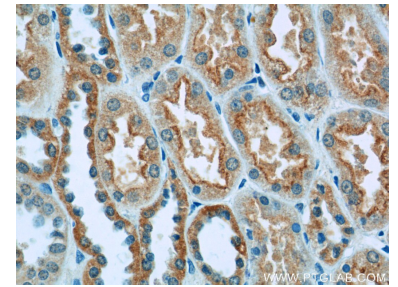
## Selected Validation Data



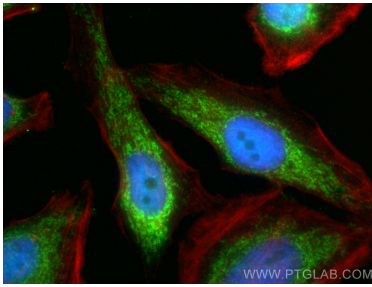
Various lysates were subjected to SDS PAGE followed by western blot with 14274-1-AP (GFM1 antibody) at dilution of 1:2000 incubated at room temperature for 1.5 hours. This data was developed using the same antibody clone with 14274-1-PBS in a different storage buffer formulation.



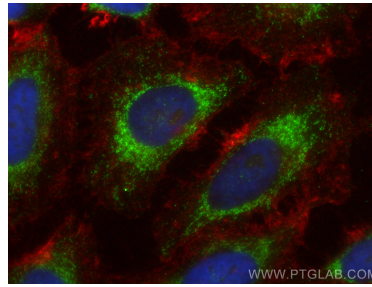
IP result of anti-GFM1 (IP:14274-1-AP, 4ug; Detection:14274-1-AP 1:1000) with HeLa cells lysate 1200ug. This data was developed using the same antibody clone with 14274-1-PBS in a different storage buffer formulation.



Immunohistochemical analysis of paraffin-embedded human kidney tissue slide using 14274-1-AP (GFM1 Antibody) at dilution of 1:50 (under 40x lens). This data was developed using the same antibody clone with 14274-1-PBS in a different storage buffer formulation.



Immunofluorescent analysis of (4% PFA) fixed HeLa cells using GFM1 antibody (14274-1-AP) at dilution of 1:200 and CoralLite@488-Conjugated Goat Anti-Rabbit IgG(H+L) (SA00013-2), CL594-Phalloidin (red). This data was developed using the same antibody clone with 14274-1-PBS in a different storage buffer formulation.



Immunofluorescent analysis of (-20°C Ethanol) fixed HeLa cells using GFM1 antibody (14274-1-AP) at dilution of 1:200 and CoralLite@488-Conjugated Goat Anti-Rabbit IgG(H+L) (SA00013-2), CL594-Phalloidin (red). This data was developed using the same antibody clone with 14274-1-PBS in a different storage buffer formulation.