

For Research Use Only

# COG6 Polyclonal antibody

Catalog Number: 14277-1-AP



## Basic Information

<b>Catalog Number:</b> 14277-1-AP	<b>GenBank Accession Number:</b> BC051723	<b>Purification Method:</b> Antigen affinity purification
<b>Size:</b> 150ul , Concentration: 600 µg/ml by Nanodrop;	<b>GeneID (NCBI):</b> 57511	<b>Recommended Dilutions:</b> WB 1:500-1:2000 IF 1:10-1:100
<b>Source:</b> Rabbit	<b>Full Name:</b> component of oligomeric golgi complex 6	
<b>Isotype:</b> IgG	<b>Calculated MW:</b> 73 kDa	
<b>Immunogen Catalog Number:</b> AG5624	<b>Observed MW:</b> 73 kDa	

## Applications

<b>Tested Applications:</b> FC, IF, WB, ELISA	<b>Positive Controls:</b>
<b>Species Specificity:</b> human, mouse, rat	<b>WB :</b> human brain tissue, HEK-293 cells, NIH/3T3 cells, HeLa cells, HepG2 cells, Jurkat cells
	<b>IF :</b> MCF-7 cells, Hela cells

## Background Information

### Storage

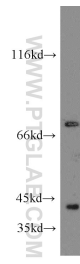
**Storage:**  
Store at -20°C. Stable for one year after shipment.  
**Storage Buffer:**  
PBS with 0.02% sodium azide and 50% glycerol pH 7.3.  
Aliquoting is unnecessary for -20°C storage

\*\*\* 20ul sizes contain 0.1% BSA

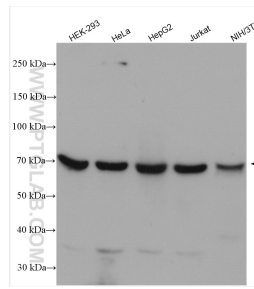
For technical support and original validation data for this product please contact:  
T: 1 (888) 4PTGLAB (1-888-478-4522) (toll free in USA), or 1(312) 455-8498 (outside USA)  
E: proteintech@ptglab.com  
W: ptglab.com

This product is exclusively available under Proteintech Group brand and is not available to purchase from any other manufacturer.

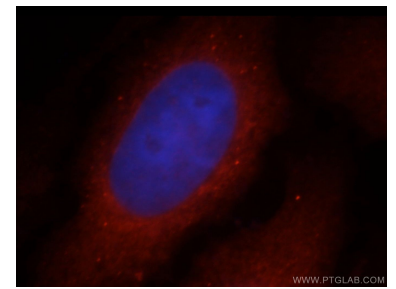
## Selected Validation Data



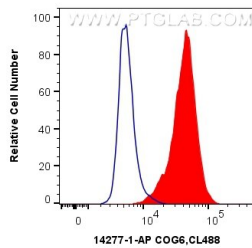
human brain tissue were subjected to SDS PAGE followed by western blot with 14277-1-AP (COG6 antibody) at dilution of 1:300 incubated at room temperature for 1.5 hours.



Various lysates were subjected to SDS PAGE followed by western blot with 14277-1-AP (COG6 antibody) at dilution of 1:2000 incubated at room temperature for 1.5 hours.



Immunofluorescent analysis of MCF-7 cells, using COG6 antibody 14277-1-AP at 1:25 dilution and Rhodamine-labeled goat anti-rabbit IgG (red). Blue pseudocolor = DAPI (fluorescent DNA dye).



1X10<sup>6</sup> HeLa cells were intracellularly stained with 0.4 ug Anti-Human COG6 (14277-1-AP) and CoraLite@488-Conjugated AffiniPure Goat Anti-Rabbit IgG(H+L) at dilution 1:1000 (red), or 0.4 ug Control Antibody. Cells were fixed with 4% PFA and permeabilized with Flow Cytometry Perm Buffer (PF00011-C).