

For Research Use Only

ARHGDIG Polyclonal antibody

Catalog Number: 14282-1-AP

1 Publications



Basic Information

Catalog Number:

14282-1-AP

Size:

150ul, Concentration: 850 ug/ml by Nanodrop and 433 ug/ml by Bradford method using BSA as the standard;

Source:

Rabbit

Isotype:

IgG

Immunogen Catalog Number:

AG5554

GenBank Accession Number:

BC047699

GeneID (NCBI):

398

UNIPROT ID:

Q99819

Full Name:

Rho GDP dissociation inhibitor (GDI)

gamma

Calculated MW:

25 kDa

Observed MW:

25 kDa

Purification Method:

Antigen affinity purification

Recommended Dilutions:

WB 1:500-1:2000

IHC 1:20-1:200

Applications

Tested Applications:

WB, IHC, ELISA

Cited Applications:

WB

Species Specificity:

human, mouse, rat

Cited Species:

human

Note-IHC: suggested antigen retrieval with TE buffer pH 9.0; (*) Alternatively, antigen retrieval may be performed with citrate buffer pH 6.0

Positive Controls:

WB : HEK-293 cells, human brain tissue, HeLa cells, Jurkat cells, MCF-7 cells

IHC : human pancreas cancer tissue,

Notable Publications

Author	Pubmed ID	Journal	Application
Hao Bo	30816545	Oncol Rep	WB

Storage

Storage:

Store at -20°C. Stable for one year after shipment.

Storage Buffer:

PBS with 0.02% sodium azide and 50% glycerol pH 7.3.

Aliquoting is unnecessary for -20°C storage

*** 20ul sizes contain 0.1% BSA

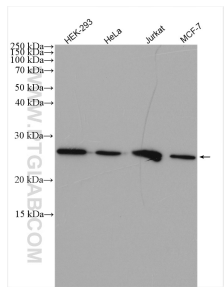
For technical support and original validation data for this product please contact:

T: 1 (888) 4PTGLAB (1-888-478-4522) (toll free in USA), or 1(312) 455-8498 (outside USA)

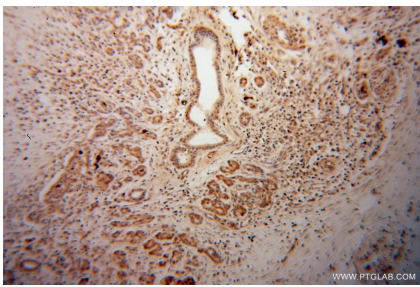
E: proteintech@ptglab.com
W: ptglab.com

This product is exclusively available under Proteintech Group brand and is not available to purchase from any other manufacturer.

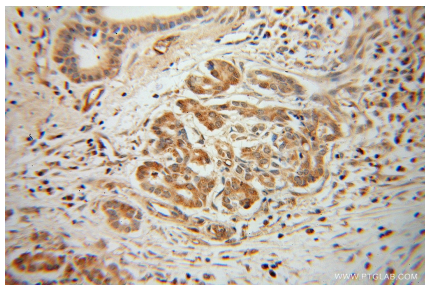
Selected Validation Data



Various lysates were subjected to SDS PAGE followed by western blot with 14282-1-AP (ARHGDI G antibody) at dilution of 1:1000 incubated at room temperature for 1.5 hours.



Immunohistochemical analysis of paraffin-embedded human pancreas cancer using 14282-1-AP (ARHGDI G antibody) at dilution of 1:100 (under 10x lens).



Immunohistochemical analysis of paraffin-embedded human pancreas cancer using 14282-1-AP (ARHGDI G antibody) at dilution of 1:100 (under 40x lens).