

For Research Use Only

# RAB26 Polyclonal antibody

Catalog Number: 14284-1-AP

Featured Product

9 Publications



## Basic Information

### Catalog Number:

14284-1-AP

### Size:

150ul, Concentration: 213 ug/ml by Nanodrop and 213 ug/ml by Bradford method using BSA as the standard;

### Source:

Rabbit

### Isotype:

IgG

### Immunogen Catalog Number:

AG5581

### GenBank Accession Number:

BC066913

### GeneID (NCBI):

25837

### UNIPROT ID:

Q9ULW5

### Full Name:

RAB26, member RAS oncogene family

### Calculated MW:

28 kDa

### Observed MW:

27-30 kDa

### Purification Method:

Antigen affinity purification

### Recommended Dilutions:

WB 1:500-1:1000

IHC 1:50-1:500

IF/ICC 1:200-1:800

## Applications

### Tested Applications:

WB, IHC, IF/ICC, FC (Intra), ELISA

### Cited Applications:

WB, IHC, IF, IP

### Species Specificity:

human, mouse

### Cited Species:

human, mouse

**Note-IHC: suggested antigen retrieval with TE buffer pH 9.0; (\*) Alternatively, antigen retrieval may be performed with citrate buffer pH 6.0**

### Positive Controls:

WB : mouse pancreas tissue,

IHC : human pancreas tissue,

IF/ICC : MCF-7 cells, BxPC-3 cells

## Notable Publications

| Author     | Pubmed ID | Journal           | Application |
|------------|-----------|-------------------|-------------|
| Nianli Liu | 31511502  | Cell Death Dis    | IHC         |
| Zhuo Ma    | 36341850  | Sci Total Environ | WB,IF       |
| Lu Liang   | 35677538  | J Immunol Res     | WB          |

## Storage

### Storage:

Store at -20°C. Stable for one year after shipment.

### Storage Buffer:

PBS with 0.02% sodium azide and 50% glycerol pH 7.3.

Aliquoting is unnecessary for -20°C storage

\*\*\* 20ul sizes contain 0.1% BSA

For technical support and original validation data for this product please contact:

T: 1 (888) 4PTGLAB (1-888-478-4522) (toll free in USA), or 1(312) 455-8498 (outside USA)

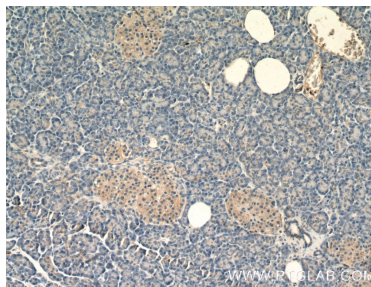
E: [proteintech@ptglab.com](mailto:proteintech@ptglab.com)  
W: [ptglab.com](http://ptglab.com)

This product is exclusively available under Proteintech Group brand and is not available to purchase from any other manufacturer.

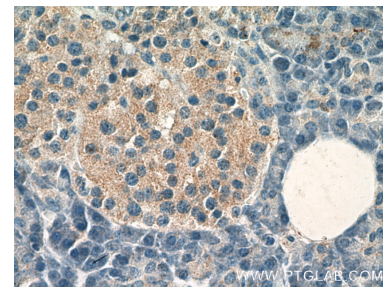
## Selected Validation Data



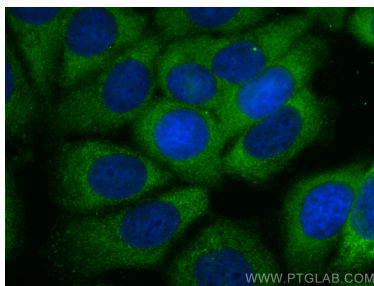
mouse pancreas tissue were subjected to SDS PAGE followed by western blot with 14284-1-AP (RAB26 antibody) at dilution of 1:300 incubated at room temperature for 1.5 hours.



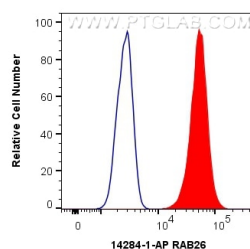
Immunohistochemical analysis of paraffin-embedded human pancreas tissue slide using 14284-1-AP (RAB26 Antibody) at dilution of 1:200 (under 10x lens).



Immunohistochemical analysis of paraffin-embedded human pancreas tissue slide using 14284-1-AP (RAB26 Antibody) at dilution of 1:200 (under 40x lens).



Immunofluorescent analysis of (-20°C Methanol) fixed MCF-7 cells using RAB26 antibody (14284-1-AP) at dilution of 1:400 and CoraLite®488-Conjugated AffiniPure Goat Anti-Rabbit IgG(H+L).



1X10<sup>6</sup> MCF-7 cells were intracellularly stained with 0.4 ug Anti-Human RAB26 (14284-1-AP) and CoraLite®488-Conjugated AffiniPure Goat Anti-Rabbit IgG(H+L) at dilution 1:1000 (red), or 0.4 ug Isotype Control. Cells were fixed with 4% PFA and permeabilized with Flow Cytometry Perm Buffer (PF00011-C).