

For Research Use Only

# HLTF Polyclonal antibody, PBS Only

Catalog Number: 14286-1-PBS

Featured Product



## Basic Information

**Catalog Number:**

14286-1-PBS

**Size:**

100ug, Concentration: 1 mg/ml by Nanodrop;

**Source:**

Rabbit

**Isotype:**

IgG

**Immunogen Catalog Number:**

AG5596

**GenBank Accession Number:**

BC044659

**GeneID (NCBI):**

6596

**UNIPROT ID:**

Q14527

**Full Name:**

helicase-like transcription factor

**Calculated MW:**

114 kDa

**Observed MW:**

114 kDa

**Purification Method:**

Antigen affinity purification

## Applications

**Tested Applications:**

WB, IHC, IF/ICC, IP, Indirect ELISA

**Species Specificity:**

human, mouse, rat

## Background Information

Helicase-like Transcription Factor (HLTF) is a crucial nuclear protein and member of the SWI/SNF family of chromatin-remodeling complexes, playing a dual role in transcription regulation and DNA damage repair. It functions dually as a regulator of gene expression, utilizing its ATP-dependent helicase activity to modify chromatin structure and facilitate transcription, and as a central effector in the DNA damage response pathway. HLTF is particularly crucial for promoting error-free DNA repair at stalled replication forks via a mechanism called template switching, which prevents the accumulation of mutagenic lesions. HLTF can be detected as 114 kDa.

## Storage

**Storage:**

Store at -80°C.

**Storage Buffer:**

PBS only, pH7.3

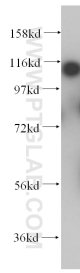
For technical support and original validation data for this product please contact:

T: 1 (888) 4PTGLAB (1-888-478-4522) (toll free in USA), or 1(312) 455-8498 (outside USA)

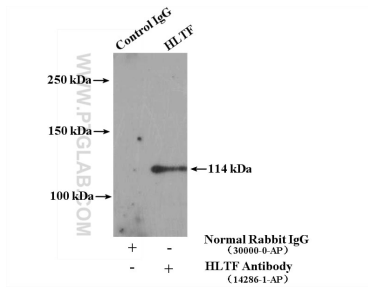
E: [proteintech@ptglab.com](mailto:proteintech@ptglab.com)  
W: [ptglab.com](http://ptglab.com)

**This product is exclusively available under Proteintech Group brand and is not available to purchase from any other manufacturer.**

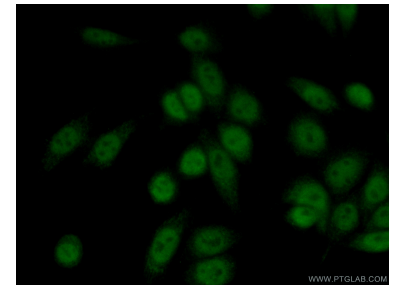
## Selected Validation Data



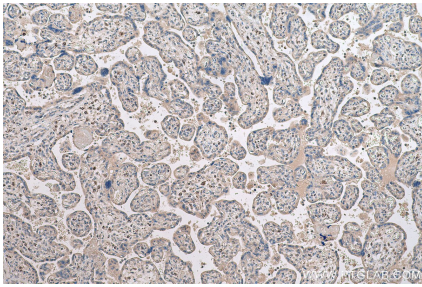
HeLa cells were subjected to SDS PAGE followed by western blot with 14286-1-AP (HLTF antibody) at dilution of 1:300 incubated at room temperature for 1.5 hours. This data was developed using the same antibody clone with 14286-1-PBS in a different storage buffer formulation.



IP result of anti-HLTF (IP:14286-1-AP, 4ug; Detection:14286-1-AP 1:500) with HeLa cells lysate 2400ug. This data was developed using the same antibody clone with 14286-1-PBS in a different storage buffer formulation.



Immunofluorescent analysis of (10% Formaldehyde) fixed HeLa cells using 14286-1-AP (HLTF antibody) at dilution of 1:50 and Alexa Fluor 488-conjugated AffiniPure Goat Anti-Rabbit IgG(H+L). This data was developed using the same antibody clone with 14286-1-PBS in a different storage buffer formulation.



Immunohistochemical analysis of paraffin-embedded human placenta tissue slide using 14286-1-AP (HLTF antibody) at dilution of 1:500 (under 10x lens). Heat mediated antigen retrieval with Tris-EDTA buffer (pH 9.0). This data was developed using the same antibody clone with 14286-1-PBS in a different storage buffer formulation.