

LRRTM1 Polyclonal antibody

Catalog Number: 14288-1-AP

Basic Information

Catalog Number: 14288-1-AP	GenBank Accession Number: BC045113	Purification Method: Antigen affinity purification
Size: 150ul , Concentration: 167 µg/ml by Bradford method using BSA as the standard;	GeneID (NCBI): 347730	Recommended Dilutions: WB 1:500-1:2400 IHC 1:20-1:200 IF 1:50-1:500
Source: Rabbit	Full Name: leucine rich repeat transmembrane neuronal 1	
Isotype: IgG	Calculated MW: 59 kDa	
Immunogen Catalog Number: AG5602	Observed MW: 59 kDa	

Applications

Tested Applications: IF, IHC, WB, ELISA	Positive Controls:
Species Specificity: human, mouse, rat	WB : HEK-293 cells, HeLa cells, mouse brain tissue
Note-IHC: suggested antigen retrieval with TE buffer pH 9.0; (*) Alternatively, antigen retrieval may be performed with citrate buffer pH 6.0	IHC : human testis tissue, human brain tissue
	IF : mouse brain tissue,

Background Information

Storage

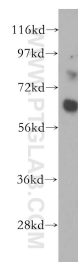
Storage:
Store at -20°C. Stable for one year after shipment.
Storage Buffer:
PBS with 0.02% sodium azide and 50% glycerol pH 7.3.
Aliquoting is unnecessary for -20°C storage

*** 20ul sizes contain 0.1% BSA

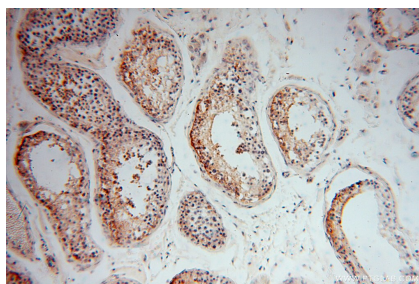
For technical support and original validation data for this product please contact:
T: 1 (888) 4PTGLAB (1-888-478-4522) (toll free in USA), or 1(312) 455-8498 (outside USA)
E: proteintech@ptglab.com
W: ptglab.com

This product is exclusively available under Proteintech Group brand and is not available to purchase from any other manufacturer.

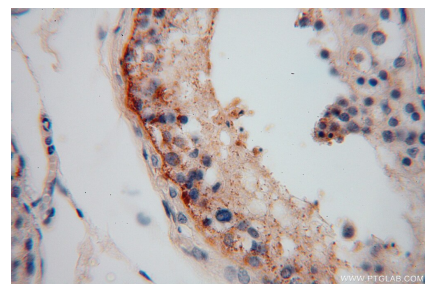
Selected Validation Data



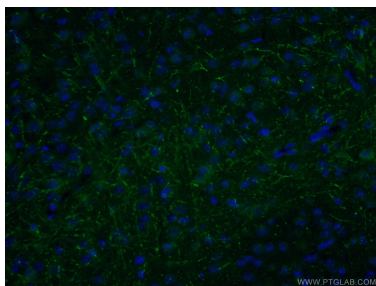
HEK-293 cells were subjected to SDS PAGE followed by western blot with 14288-1-AP (LRRTM1 antibody) at dilution of 1:400 incubated at room temperature for 1.5 hours.



Immunohistochemical analysis of paraffin-embedded human testis using 14288-1-AP (LRRTM1 antibody) at dilution of 1:100 (under 10x lens).



Immunohistochemical analysis of paraffin-embedded human testis using 14288-1-AP (LRRTM1 antibody) at dilution of 1:100 (under 40x lens).



Immunofluorescent analysis of (4% PFA) fixed mouse brain tissue using 14288-1-AP (LRRTM1 antibody) at dilution of 1:50 and Alexa Fluor 488-conjugated AffiniPure Goat Anti-Rabbit IgG(H+L).