

For Research Use Only

APPL2 Polyclonal antibody

Catalog Number: 14294-1-AP

4 Publications



Basic Information

Catalog Number:

14294-1-AP

Size:

150ul, Concentration: 267 ug/ml by Bradford method using BSA as the standard;

Source:

Rabbit

Isotype:

IgG

Immunogen Catalog Number:

AG5626

GenBank Accession Number:

BC033731

GeneID (NCBI):

55198

UNIPROT ID:

Q8NEU8

Full Name:

adaptor protein, phosphotyrosine interaction, PH domain and leucine zipper containing 2

Calculated MW:

74 kDa

Observed MW:

74 kDa

Purification Method:

Antigen affinity purification

Recommended Dilutions:

WB 1:500-1:1000

IHC 1:250-1:1000

IF/ICC 1:50-1:500

Applications

Tested Applications:

WB, IHC, IF/ICC, ELISA

Cited Applications:

WB, IF

Species Specificity:

human, mouse

Cited Species:

human, mouse

Note-IHC: suggested antigen retrieval with TE buffer pH 9.0; (*) Alternatively, antigen retrieval may be performed with citrate buffer pH 6.0

Positive Controls:

WB : BxPC-3 cells,

IHC : mouse brain tissue, human malignant melanoma tissue, human pancreas cancer tissue

IF/ICC : BxPC-3 cells,

Notable Publications

Author	Pubmed ID	Journal	Application
Siqi Xu	36458981	J Immunol	WB
Yuan-Li Chen	37222007	J Cachexia Sarcopenia Muscle	WB
Paroma Chatterjee	37096733	J Cell Sci	IF

Storage

Storage:

Store at -20°C. Stable for one year after shipment.

Storage Buffer:

PBS with 0.02% sodium azide and 50% glycerol pH 7.3.

Aliquoting is unnecessary for -20°C storage

*** 20ul sizes contain 0.1% BSA

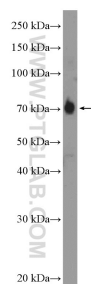
For technical support and original validation data for this product please contact:

T: 1 (888) 4PTGLAB (1-888-478-4522) (toll free in USA), or 1(312) 455-8498 (outside USA)

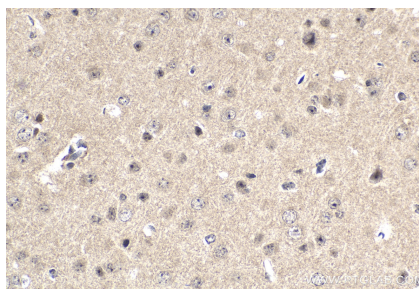
E: proteintech@ptglab.com
W: ptglab.com

This product is exclusively available under Proteintech Group brand and is not available to purchase from any other manufacturer.

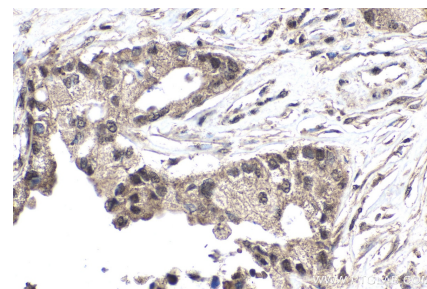
Selected Validation Data



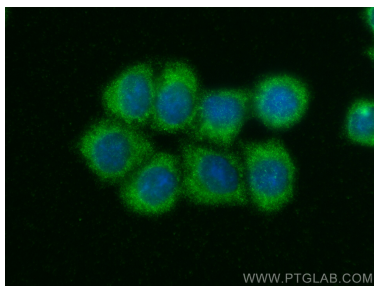
BxPC-3 cells were subjected to SDS PAGE followed by western blot with 14294-1-AP (APPL2 Antibody) at dilution of 1:600 incubated at room temperature for 1.5 hours.



Immunohistochemical analysis of paraffin-embedded mouse brain tissue slide using 14294-1-AP (APPL2 antibody) at dilution of 1:500 (under 40x lens). Heat mediated antigen retrieval with Tris-EDTA buffer (pH 9.0).



Immunohistochemical analysis of paraffin-embedded human pancreas cancer tissue slide using 14294-1-AP (APPL2 antibody) at dilution of 1:200 (under 40x lens). Heat mediated antigen retrieval with Tris-EDTA buffer (pH 9.0).



Immunofluorescent analysis of (-20°C Ethanol) fixed BxPC-3 cells using APPL2 antibody (14294-1-AP) at dilution of 1:200 and CoraLite®488-Conjugated Goat Anti-Rabbit IgG(H+L) (SA00013-2).