

For Research Use Only

# CHST15 Polyclonal antibody

Catalog Number: 14298-1-AP

Featured Product

5 Publications



## Basic Information

### Catalog Number:

14298-1-AP

### Size:

150ul, Concentration: 500 ug/ml by Nanodrop;

### Source:

Rabbit

### Isotype:

IgG

### Immunogen Catalog Number:

AG5679

### GenBank Accession Number:

BC050540

### GeneID (NCBI):

51363

### UNIPROT ID:

Q7LFX5

### Full Name:

carbohydrate (N-acetylgalactosamine 4-sulfate 6-O) sulfotransferase 15

### Calculated MW:

65 kDa

### Observed MW:

49 kDa, 69 kDa

### Purification Method:

Antigen affinity purification

### Recommended Dilutions:

WB 1:1000-1:4000

IP 0.5-4.0 ug for 1.0-3.0 mg of total protein lysate

## Applications

### Tested Applications:

WB, IP, ELISA

### Cited Applications:

WB, IHC, IF

### Species Specificity:

human, mouse, rat

### Cited Species:

human, mouse

### Positive Controls:

WB: Jurkat cells, mouse spleen tissue, Raji cells, U-937 cells, mouse heart tissue, rat heart tissue

IP: Raji cells,

## Background Information

Carbohydrate sulfotransferase 15, also known as CHST15, BRAG, GALNAC4S6ST and KIAA0598, is a single-pass type II membrane protein which belongs to the sulfotransferase 1 family. CHST15 is a sulfotransferase that transfers sulfate from 3'-phosphoadenosine 5'-phosphosulfate (PAPS) to the C-6 hydroxyl group of the GalNAc 4-sulfate residue of chondroitin sulfate A and forms chondroitin sulfate E containing GlcA-GalNAc(4,6-SO<sub>4</sub>) repeating units. It also transfers sulfate to a unique non-reducing terminal sequence, GalNAc(4SO<sub>4</sub>)-GlcA(2SO<sub>4</sub>)-GalNAc(6SO<sub>4</sub>), to yield a highly sulfated structure similar to the structure found in thrombomodulin chondroitin sulfate. CHST15 may also act as a B-cell receptor involved in BCR ligation-mediated early activation that mediate regulatory signals key to B-cell development and / or regulation of B-cell-specific RAG expression. CHST15 is expressed in B-cell-enriched tissues but not in fetal or adult thymus. It is expressed in fetal and adult spleen, lymph node, tonsil, bone marrow and peripheral leukocytes. It can be detected as 49 kDa and 69 kDa.

## Notable Publications

Author	Pubmed ID	Journal	Application
Matthew R Blake	35604022	Elife	WB
Mingxiu Luo	24857976	Osteoarthritis Cartilage	IHC
Yang Sun	35434026	Ann Transl Med	IF

## Storage

### Storage:

Store at -20°C. Stable for one year after shipment.

### Storage Buffer:

PBS with 0.02% sodium azide and 50% glycerol pH 7.3.

Aliquoting is unnecessary for -20°C storage

\*\*\* 20ul sizes contain 0.1% BSA

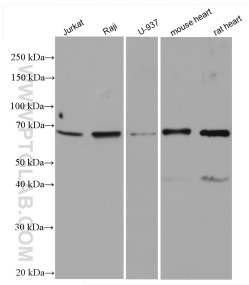
For technical support and original validation data for this product please contact:

T: 1 (888) 4PTGLAB (1-888-478-4522) (toll free in USA), or 1(312) 455-8498 (outside USA)

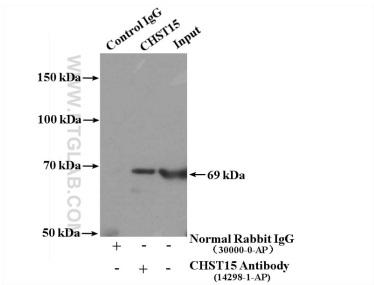
E: [proteintech@ptglab.com](mailto:proteintech@ptglab.com)  
W: [ptglab.com](http://ptglab.com)

This product is exclusively available under Proteintech Group brand and is not available to purchase from any other manufacturer.

Selected Validation Data



Various lysates were subjected to SDS PAGE followed by western blot with 14298-1-AP (CHST15 antibody) at dilution of 1:2000 incubated at room temperature for 1.5 hours.



IP result of anti-CHST15 (IP:14298-1-AP, 4ug; Detection:14298-1-AP 1:500) with Raji cells lysate 3200ug.