

For Research Use Only

SLC38A3 Polyclonal antibody

Catalog Number: 14315-1-AP

Featured Product

19 Publications



Basic Information

Catalog Number:

14315-1-AP

Size:

150ul, Concentration: 350 ug/ml by Nanodrop;

Source:

Rabbit

Isotype:

IgG

Immunogen Catalog Number:

AG5553

GenBank Accession Number:

BC042875

GeneID (NCBI):

10991

UNIPROT ID:

Q99624

Full Name:

solute carrier family 38, member 3

Calculated MW:

504 aa, 56 kDa

Observed MW:

65-70 kDa

Purification Method:

Antigen affinity purification

Recommended Dilutions:

WB 1:1000-1:4000

IP 0.5-4.0 ug for 1.0-3.0 mg of total protein lysate

IHC 1:20-1:200

IF/ICC 1:50-1:500

Applications

Tested Applications:

WB, IHC, IF/ICC, IP, ELISA

Cited Applications:

WB, IHC, IF, IP, CoIP

Species Specificity:

human, mouse

Cited Species:

human, mouse

Note-IHC: suggested antigen retrieval with TE buffer pH 9.0; (*) Alternatively, antigen retrieval may be performed with citrate buffer pH 6.0

Positive Controls:

WB : HeLa cells, mouse liver tissue, mouse pancreas tissue

IP : mouse heart tissue,

IHC : human lung cancer tissue,

IF/ICC : HEK-293 cells,

Background Information

SLC38A3, also known as SNAT3 or SN1, belongs to the SLC38 family of sodium-coupled neutral amino acid transporters. SLC38A3 mediates glutamine transport with sodium and proton coupled manner, and it contributes to ammonia metabolism in the liver and brain. SLC38A3 is highly expressed in the liver and brain astrocytes, with modest expression in the kidney, heart, and muscle. SLC38A3 may migrate higher than the predicted 56 kDa due to the glycosylation.

Notable Publications

Author	Pubmed ID	Journal	Application
Heather M Sosnoski	33199267	Neurochem Int	WB
Katarzyna Dąbrowska	34681893	Int J Mol Sci	WB, IF, CoIP
Magdalena Zielińska	26442479	J Neurochem	WB

Storage

Storage:

Store at -20°C. Stable for one year after shipment.

Storage Buffer:

PBS with 0.02% sodium azide and 50% glycerol pH 7.3.

Aliquoting is unnecessary for -20°C storage

*** 20ul sizes contain 0.1% BSA

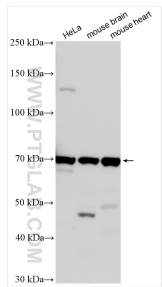
For technical support and original validation data for this product please contact:

T: 1 (888) 4PTGLAB (1-888-478-4522) (toll free in USA), or 1(312) 455-8498 (outside USA)

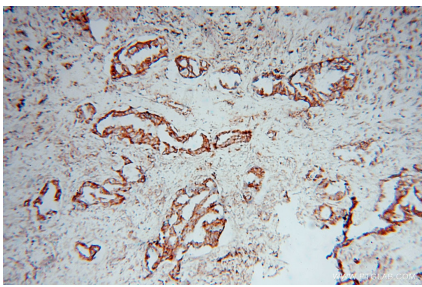
E: proteintech@ptglab.com
W: ptglab.com

This product is exclusively available under Proteintech Group brand and is not available to purchase from any other manufacturer.

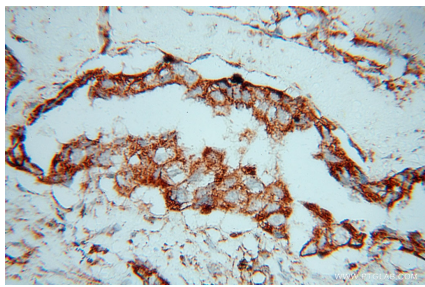
Selected Validation Data



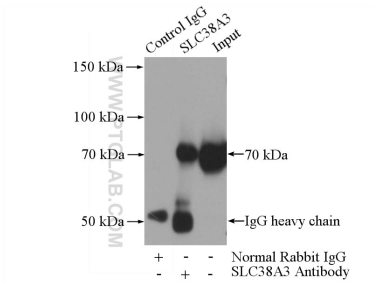
Various lysates were subjected to SDS PAGE followed by western blot with 14315-1-AP (SLC38A3 antibody) at dilution of 1:2000 incubated at room temperature for 1.5 hours.



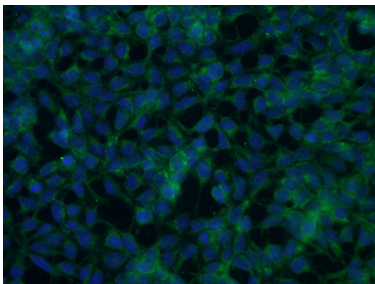
Immunohistochemical analysis of paraffin-embedded human lung cancer using 14315-1-AP (SLC38A3 antibody) at dilution of 1:100 (under 10x lens).



Immunohistochemical analysis of paraffin-embedded human lung cancer using 14315-1-AP (SLC38A3 antibody) at dilution of 1:100 (under 40x lens).



IP result of anti-SLC38A3 (IP:14315-1-AP, 3ug; Detection:14315-1-AP 1:1000) with mouse heart tissue lysate 4000ug.



Immunofluorescent analysis of (-20°C Ethanol) fixed HEK-293 cells using 14315-1-AP (SLC38A3 antibody) at dilution of 1:50 and Alexa Fluor 488-conjugated Goat Anti-Rabbit IgG(H+L).