

For Research Use Only

CADM1 Polyclonal antibody

Catalog Number: 14335-1-AP

5 Publications



Basic Information

Catalog Number: 14335-1-AP	GenBank Accession Number: BC047021	Purification Method: Antigen affinity purification
Size: 150ul , Concentration: 280 µg/ml by Nanodrop;	GeneID (NCBI): 23705	Recommended Dilutions: WB 1:500-1:1000
Source: Rabbit	Full Name: cell adhesion molecule 1	
Isotype: IgG	Calculated MW: 49 kDa	
Immunogen Catalog Number: AG5621	Observed MW: 49-60 kDa	

Applications

Tested Applications: WB, ELISA	Positive Controls: WB : mouse liver tissue, A549 cells, human placenta tissue, mouse lung tissue
Cited Applications: WB	
Species Specificity: human, mouse, rat	
Cited Species: human, mouse	

Background Information

CADM1 (cell adhesion molecule 1), also referred to as SgIGSF, Necl-2 or TSLC-1, is a cell adhesion molecule belonging to the immunoglobulin superfamily. It can mediate homophilic and heterophilic cell-cell adhesion. CADM1 is expressed by a variety of cells including neurons, mast cells, spermatogonia, pancreatic islet cells, epithelial cells such as lung alveolar cells and biliary epithelial cells. CADM1 is involved in carcinoma pathogenesis and the expression of CADM1 is frequently down-regulated in various tumors derived from epithelial cells. It acts as a tumor suppressor in non-small-cell lung cancer (NSCLC) cells. (PMID: 18332875; 17326163; 20340131)

Notable Publications

Author	Pubmed ID	Journal	Application
Yujun Li	31819525	Onco Targets Ther	WB
Zhu Ying Y	23700466	PLoS One	WB
Haiqing Cai	30013657	Oncol Lett	WB

Storage

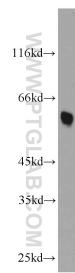
Storage:
Store at -20°C. Stable for one year after shipment.
Storage Buffer:
PBS with 0.02% sodium azide and 50% glycerol pH 7.3.
Aliquoting is unnecessary for -20°C storage

*** 20ul sizes contain 0.1% BSA

For technical support and original validation data for this product please contact:
T: 1 (888) 4PTGLAB (1-888-478-4522) (toll free in USA), or 1(312) 455-8498 (outside USA)
E: proteintech@ptglab.com
W: ptglab.com

This product is exclusively available under Proteintech Group brand and is not available to purchase from any other manufacturer.

Selected Validation Data



mouse liver tissue were subjected to SDS PAGE followed by western blot with 14335-1-AP (CADM1 antibody) at dilution of 1:1000 incubated at room temperature for 1.5 hours.