

For Research Use Only

PALB2 Polyclonal antibody

Catalog Number: 14340-1-AP **3 Publications**



Basic Information

Catalog Number: 14340-1-AP	GenBank Accession Number: BC044254	Purification Method: Antigen affinity purification
Size: 150ul , Concentration: 133 µg/ml by Bradford method using BSA as the standard;	GeneID (NCBI): 79728	Recommended Dilutions: WB 1:2000-1:12000 IHC 1:50-1:500
Source: Rabbit	Full Name: partner and localizer of BRCA2	
Isotype: IgG	Calculated MW: 131 kDa	
Immunogen Catalog Number: AG5654	Observed MW: 130 kDa; 80-90 kDa; 250-260 kDa	

Applications

Tested Applications: IHC, WB, ELISA	Positive Controls: WB : HeLa cells, IHC : human breast cancer tissue,
Cited Applications: WB	
Species Specificity: human, mouse, rat	
Cited Species: human, mouse	
Note-IHC: suggested antigen retrieval with TE buffer pH 9.0; (*) Alternatively, antigen retrieval may be performed with citrate buffer pH 6.0	

Background Information

PALB2 can interact with BRCA1 and BRCA2 and form the BRCA1-PALB2-BRCA2 complex which is critical for homologous recombination and DNA damage response. PALB2 is an essential partner of BRCA2 that promotes the localization and stability of BRCA2. The predicted MW of PALB2 is approximately 130 kDa, while the truncated PALB2 protein around 80-90 kDa can also be detected in SDS-PAGE similar to papers. (PubMed:16793542, 24141787, 24153426). There's the dimer form with WM 250-260 kDa (refer to OMID: 30289697).

Notable Publications

Author	Pubmed ID	Journal	Application
Zhihao Wang	33459381	EMBO J	WB
Gozde Inci	36500714	Molecules	WB
Huan Li	37066268	Res Sq	WB

Storage

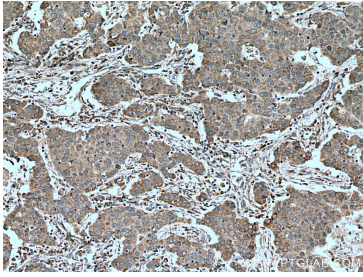
Storage:
Store at -20°C. Stable for one year after shipment.
Storage Buffer:
PBS with 0.02% sodium azide and 50% glycerol pH 7.3.
Aliquoting is unnecessary for -20°C storage

*** 20ul sizes contain 0.1% BSA

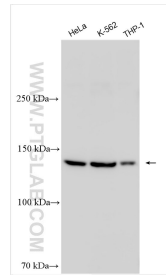
For technical support and original validation data for this product please contact:
T: 1 (888) 4PTGLAB (1-888-478-4522) (toll free in USA), or 1(312) 455-8498 (outside USA)
E: proteintech@ptglab.com
W: ptglab.com

This product is exclusively available under Proteintech Group brand and is not available to purchase from any other manufacturer.

Selected Validation Data



Immunohistochemical analysis of paraffin-embedded human breast cancer tissue slide using 14340-1-AP (PALB2 antibody) at dilution of 1:200 (under 10x lens). Heat mediated antigen retrieval with Tris-EDTA buffer (pH 9.0).



Various lysates were subjected to SDS PAGE followed by western blot with 14340-1-AP (PALB2 antibody) at dilution of 1:6000 incubated at room temperature for 1.5 hours.