

For Research Use Only

# NUB1 Polyclonal antibody

Catalog Number: 14343-1-AP **2 Publications**



## Basic Information

**Catalog Number:**

14343-1-AP

**Size:**

150ul , Concentration: 380 µg/ml by Nanodrop and 373 µg/ml by Bradford method using BSA as the standard;

**Source:**

Rabbit

**Isotype:**

IgG

**Immunogen Catalog Number:**

AG5668

**GenBank Accession Number:**

BC046354

**GeneID (NCBI):**

51667

**Full Name:**

negative regulator of ubiquitin-like proteins 1

**Calculated MW:**

71 kDa

**Observed MW:**

69 kDa

**Purification Method:**

Antigen affinity purification

**Recommended Dilutions:**

WB 1:500-1:1000

IP 0.5-4.0 ug for IP and 1:500-1:1000 for WB

## Applications

**Tested Applications:**

IP, WB, ELISA

**Cited Applications:**

IF, IHC, WB

**Species Specificity:**

human, mouse, rat

**Cited Species:**

human, mouse

**Positive Controls:**

**WB :** HeLa cells, COLO 320 cells, HepG2 cells, K-562 cells, mouse kidney tissue, Raji cells

**IP :** HEK-293 cells,

## Background Information

Proteasome-associated protein NEDD8 ultimate buster 1 (NUB1) is an interferon-inducible protein that down-regulates NEDD8 expression and its conjugation system. Over-expression of NUB1 induces a growth-inhibitory effect in cells, and it mediates anti-proliferative actions and apoptosis in renal cell carcinoma cells through cell-cycle regulation. Expression of NUB1 leads to decreased modification of p53 with NEDD8 and stimulation of p53 ubiquitination. Recent finding revealed that NUB1, by regulating GSK3β levels, modulates tau phosphorylation and aggregation, and is a key player in neurodegeneration associated with tau pathology.

## Notable Publications

Author	Pubmed ID	Journal	Application
Kunikazu Tanji	26797281	Biochem Biophys Res Commun	WB,IF
Fumiaki Mori	24812700	Neuropathology	IHC

## Storage

**Storage:**

Store at -20°C. Stable for one year after shipment.

**Storage Buffer:**

PBS with 0.02% sodium azide and 50% glycerol pH 7.3.

Aliquoting is unnecessary for -20°C storage

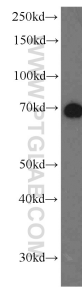
For technical support and original validation data for this product please contact:

T: 1 (888) 4PTGLAB (1-888-478-4522) (toll free in USA), or 1(312) 455-8498 (outside USA)

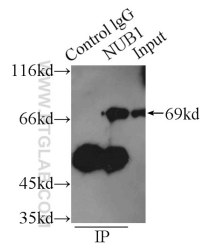
E: proteintech@ptglab.com  
W: ptglab.com

**This product is exclusively available under Proteintech Group brand and is not available to purchase from any other manufacturer.**

## Selected Validation Data



HeLa cells were subjected to SDS PAGE followed by western blot with 14343-1-AP (NUB1 antibody) at dilution of 1:600 incubated at room temperature for 1.5 hours.



IP Result of anti-NUB1 (IP:14343-1-AP, 3ug; Detection:14343-1-AP 1:600) with HEK-293 cells lysate 2500ug.