

For Research Use Only

KIF4A Polyclonal antibody

Catalog Number: 14344-1-AP **2 Publications**



Basic Information

Catalog Number: 14344-1-AP	GenBank Accession Number: BC050548	Purification Method: Antigen affinity purification
Size: 150ul , Concentration: 267 µg/ml by Nanodrop and 267 µg/ml by Bradford method using BSA as the standard;	GeneID (NCBI): 24137	Recommended Dilutions: IHC 1:20-1:200 IF 1:20-1:200
Source: Rabbit	Full Name: kinesin family member 4A	
Isotype: IgG	Calculated MW: 140 kDa	
Immunogen Catalog Number: AG5682		

Applications

Tested Applications: IF, IHC, ELISA	Positive Controls: IHC : human lung cancer tissue, IF : HepG2 cells,
Cited Applications: IHC, WB	
Species Specificity: human, mouse, rat	
Cited Species: human	

Note-IHC: suggested antigen retrieval with TE buffer pH 9.0; (*) Alternatively, antigen retrieval may be performed with citrate buffer pH 6.0

Background Information

Notable Publications

Author	Pubmed ID	Journal	Application
Ke Chen	31796514	Clin Cancer Res	
Man Zhang	36046597	Anal Cell Pathol (Amst)	WB,IHC

Storage

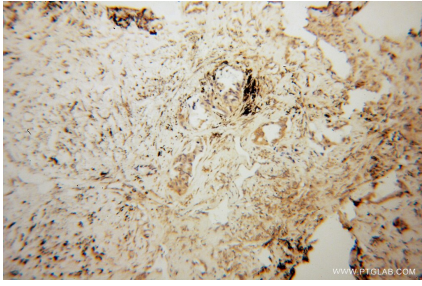
Storage:
Store at -20°C. Stable for one year after shipment.
Storage Buffer:
PBS with 0.02% sodium azide and 50% glycerol pH 7.3.
Aliquoting is unnecessary for -20°C storage

***** 20ul sizes contain 0.1% BSA**

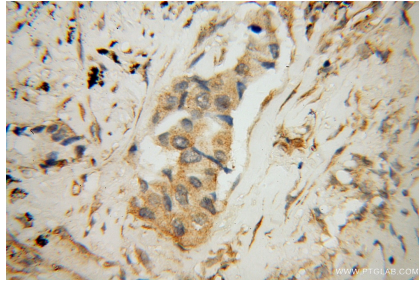
For technical support and original validation data for this product please contact:
T: 1 (888) 4PTGLAB (1-888-478-4522) (toll free in USA), or 1(312) 455-8498 (outside USA)
E: proteintech@ptglab.com
W: ptglab.com

This product is exclusively available under Proteintech Group brand and is not available to purchase from any other manufacturer.

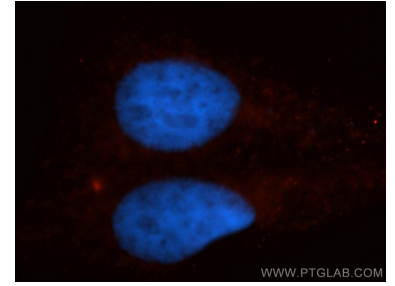
Selected Validation Data



Immunohistochemical analysis of paraffin-embedded human lung cancer using 14344-1-AP (KIF4A antibody) at dilution of 1:50 (under 10x lens).



Immunohistochemical analysis of paraffin-embedded human lung cancer using 14344-1-AP (KIF4A antibody) at dilution of 1:50 (under 40x lens).



Immunofluorescent analysis of HepG2 cells, using KIF4A antibody 14344-1-AP at 1:50 dilution and Rhodamine-labeled goat anti-rabbit IgG (red). Blue pseudocolor = DAPI (fluorescent DNA dye).