

For Research Use Only

VBP1 Polyclonal antibody

Catalog Number: 14345-1-AP **1 Publications**



Basic Information

Catalog Number: 14345-1-AP	GenBank Accession Number: BC046094	Purification Method: Antigen affinity purification
Size: 150ul , Concentration: 220 µg/ml by Bradford method using BSA as the standard;	GeneID (NCBI): 7411	Recommended Dilutions: WB 1:1000-1:10000 IHC 1:50-1:500 IF 1:20-1:200
Source: Rabbit	Full Name: von Hippel-Lindau binding protein 1	
Isotype: IgG	Calculated MW: 23 kDa	
Immunogen Catalog Number: AG5685	Observed MW: 23-25 kDa	

Applications

Tested Applications: IF, IHC, WB, ELISA	Positive Controls:
Cited Applications: IF	WB: C6 cells, K-562 cells, HepG2 cells, mouse liver tissue, NIH/3T3 cells, mouse brain tissue, rat brain tissue
Species Specificity: human, mouse, rat	IHC: human lymphoma tissue, IF: HepG2 cells,
Note-IHC: <i>suggested antigen retrieval with TE buffer pH 9.0; (*) Alternatively, antigen retrieval may be performed with citrate buffer pH 6.0</i>	

Background Information

Notable Publications

Author	Pubmed ID	Journal	Application
Franck Chesnel	33137104	PLoS Genet	IF

Storage

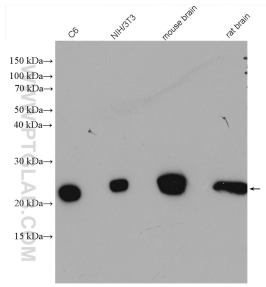
Storage:
Store at -20°C. Stable for one year after shipment.
Storage Buffer:
PBS with 0.02% sodium azide and 50% glycerol pH 7.3.
Aliquoting is unnecessary for -20°C storage

*** 20ul sizes contain 0.1% BSA

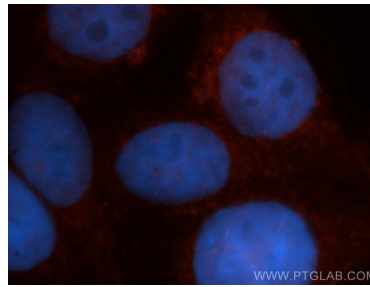
For technical support and original validation data for this product please contact:
T: 1 (888) 4PTGLAB (1-888-478-4522) (toll free in USA), or 1(312) 455-8498 (outside USA)
E: proteintech@ptglab.com
W: ptglab.com

This product is exclusively available under Proteintech Group brand and is not available to purchase from any other manufacturer.

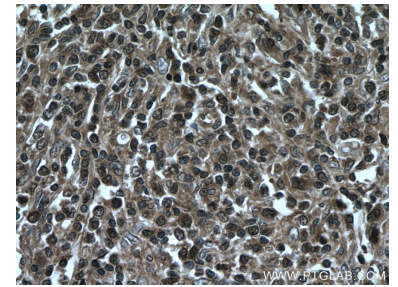
Selected Validation Data



Various lysates were subjected to SDS PAGE followed by western blot with 14345-1-AP (VBP1 antibody) at dilution of 1:8000 incubated at 4 degree celsius over night.



Immunofluorescent analysis of HepG2 cells, using VBP1 antibody 14345-1-AP at 1:50 dilution and Rhodamine-labeled goat anti-rabbit IgG (red). Blue pseudocolor = DAPI (fluorescent DNA dye).



Immunohistochemical analysis of paraffin-embedded human lymphoma tissue slide using 14345-1-AP (VBP1 antibody) at dilution of 1:200 (under 40x lens. Heat mediated antigen retrieval with Tris-EDTA buffer (pH 9.0).