

For Research Use Only

# CRCP Polyclonal antibody

Catalog Number: 14348-1-AP **6 Publications**



## Basic Information

<b>Catalog Number:</b> 14348-1-AP	<b>GenBank Accession Number:</b> BC040107	<b>Purification Method:</b> Antigen affinity purification
<b>Size:</b> 150ul, Concentration: 473 µg/ml by Nanodrop and 267 µg/ml by Bradford method using BSA as the standard;	<b>GeneID (NCBI):</b> 27297	<b>Recommended Dilutions:</b> WB 1:1000-1:4000 IP 0.5-4.0 ug for IP and 1:500-1:2000 for WB
<b>Source:</b> Rabbit	<b>Full Name:</b> CGRP receptor component	<b>Calculated MW:</b> 17 kDa
<b>Isotype:</b> IgG	<b>Observed MW:</b> 20 kDa	<b>IHC 1:20-1:200</b>
<b>Immunogen Catalog Number:</b> AG5689		

## Applications

<b>Tested Applications:</b> FC, IHC, IP, WB, ELISA	<b>Positive Controls:</b> WB: Raji cells, HeLa cells, human testis tissue, MCF-7 cells
<b>Cited Applications:</b> IF, WB	IP: Raji cells,
<b>Species Specificity:</b> human, mouse, rat	IHC: human testis tissue,
<b>Cited Species:</b> human, mouse, rat	

**Note-IHC: suggested antigen retrieval with TE buffer pH 9.0; (\*) Alternatively, antigen retrieval may be performed with citrate buffer pH 6.0**

## Background Information

### Notable Publications

Author	Pubmed ID	Journal	Application
Qi An	34020664	J Neuroinflammation	IF
Rui Shi	35317822	J Transl Med	WB
Tingjiao Liu	34296452	Cell Biochem Funct	IF

## Storage

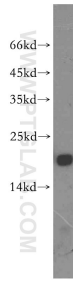
**Storage:**  
Store at -20°C. Stable for one year after shipment.  
**Storage Buffer:**  
PBS with 0.02% sodium azide and 50% glycerol pH 7.3.  
Aliquoting is unnecessary for -20°C storage

\*\*\* 20ul sizes contain 0.1% BSA

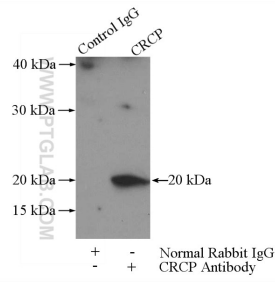
For technical support and original validation data for this product please contact:  
T: 1 (888) 4PTGLAB (1-888-478-4522) (toll free in USA), or 1(312) 455-8498 (outside USA)  
E: proteintech@ptglab.com  
W: ptglab.com

This product is exclusively available under Proteintech Group brand and is not available to purchase from any other manufacturer.

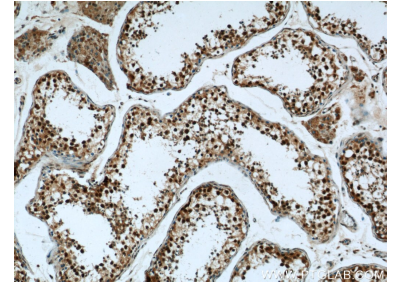
## Selected Validation Data



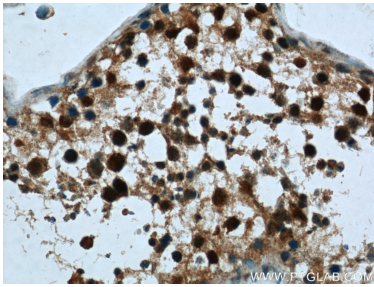
Raji cells were subjected to SDS PAGE followed by western blot with 14348-1-AP (CRCP antibody) at dilution of 1:1000 incubated at room temperature for 1.5 hours.



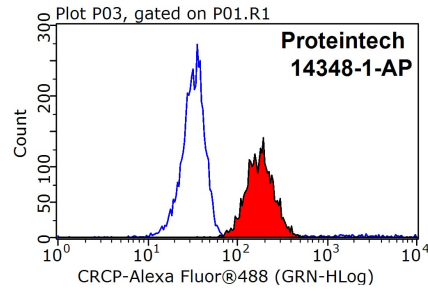
IP Result of anti-CRCP (IP:14348-1-AP, 3ug; Detection:14348-1-AP 1:1000) with Raji cells lysate 2800ug.



Immunohistochemical analysis of paraffin-embedded human testis tissue slide using 14348-1-AP (CRCP Antibody) at dilution of 1:50 (under 10x lens).



Immunohistochemical analysis of paraffin-embedded human testis tissue slide using 14348-1-AP (CRCP Antibody) at dilution of 1:50 (under 40x lens).



1X10<sup>6</sup> Raji cells were stained with 0.2ug CRCP antibody (14348-1-AP, red) and control antibody (blue). Fixed with 90% MeOH blocked with 3% BSA (30 min). Alexa Fluor 488-conjugated AffiniPure Goat Anti-Rabbit IgG(H+L) with dilution 1:1000.