

For Research Use Only

RBP3 Polyclonal antibody

Catalog Number: 14352-1-AP **5 Publications**



Basic Information

Catalog Number: 14352-1-AP	GenBank Accession Number: BC039844	Purification Method: Antigen affinity purification
Size: 150ul, Concentration: 400 µg/ml by Bradford method using BSA as the standard;	GeneID (NCBI): 5949	Recommended Dilutions: WB 1:1000-1:4000 IP 0.5-4.0 ug for 1.0-3.0 mg of total protein lysate IHC 1:20-1:200
Source: Rabbit	Full Name: retinol binding protein 3, interstitial	
Isotype: IgG	Calculated MW: 135 kDa	
Immunogen Catalog Number: AG5699	Observed MW: 140 kDa	

Applications

Tested Applications: IHC, IP, WB, ELISA	Positive Controls: WB: mouse eye tissue, Y79 cells IP: Y79 cells, IHC: human eye tissue,
Cited Applications: IF, IHC, IP, WB	
Species Specificity: human, mouse, rat	
Cited Species: human, mouse	
Note-IHC: suggested antigen retrieval with TE buffer pH 9.0; (*) Alternatively, antigen retrieval may be performed with citrate buffer pH 6.0	

Background Information

RBP3 (retinoid-binding protein 3), also called interstitial retinoid-binding protein (IRBP), is a large glycoprotein that is synthesized and secreted by rod photoreceptor cells into the interphotoreceptor matrix. It is known to bind retinoids and fatty acids. RBP3 migrates around 136-140 kDa in the western blot analysis. (PMID: 15928609)

Notable Publications

Author	Pubmed ID	Journal	Application
Taylor N LaFlam	26527800	J Exp Med	IP
Majed Felemban	29777959	Acta Biomater	IHC
Suguru Yamasaki	35024589	iScience	IF

Storage

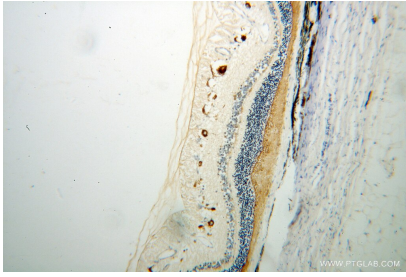
Storage:
Store at -20°C. Stable for one year after shipment.
Storage Buffer:
PBS with 0.02% sodium azide and 50% glycerol pH 7.3.
Aliquoting is unnecessary for -20°C storage

*** 20ul sizes contain 0.1% BSA

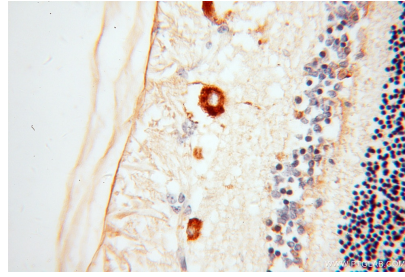
For technical support and original validation data for this product please contact:
T: 1 (888) 4PTGLAB (1-888-478-4522) (toll free in USA), or 1(312) 455-8498 (outside USA)
E: proteintech@ptglab.com
W: ptglab.com

This product is exclusively available under Proteintech Group brand and is not available to purchase from any other manufacturer.

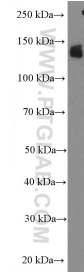
Selected Validation Data



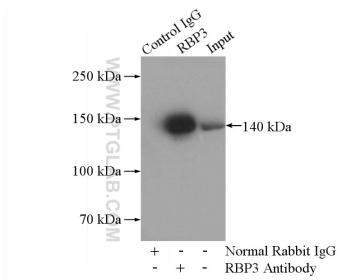
Immunohistochemical analysis of paraffin-embedded human eye using 14352-1-AP (RBP3 antibody) at dilution of 1:50 (under 10x lens).



Immunohistochemical analysis of paraffin-embedded human eye using 14352-1-AP (RBP3 antibody) at dilution of 1:50 (under 40x lens).



mouse eye tissue were subjected to SDS PAGE followed by western blot with 14352-1-AP (RBP3 Antibody) at dilution of 1:2000 incubated at room temperature for 1.5 hours.



IP Result of anti-RBP3 (IP:14352-1-AP, 4ug;
Detection:14352-1-AP 1:400) with Y79 cells lysate 2000ug.