

For Research Use Only

MEF2D Polyclonal antibody

Catalog Number: 14353-1-AP

Featured Product

11 Publications



Basic Information

Catalog Number: 14353-1-AP	GenBank Accession Number: BC040949	Purification Method: Antigen affinity purification
Size: 150ul , Concentration: 500 µg/ml by Nanodrop and 240 µg/ml by Bradford method using BSA as the standard;	GeneID (NCBI): 4209	Recommended Dilutions: WB 1:500-1:1000 IHC 1:200-1:800 IF 1:50-1:500
Source: Rabbit	Full Name: myocyte enhancer factor 2D	
Isotype: IgG	Calculated MW: 56 kDa	
Immunogen Catalog Number: AG5700	Observed MW: 55-60 kDa	

Applications

Tested Applications: IF, IHC, WB, ELISA	Positive Controls: WB : C2C12 cell, HeLa cells IHC : mouse brain tissue, IF : HeLa cells,
Cited Applications: IF, IHC, WB	
Species Specificity: human, mouse	
Cited Species: human, rat, mouse	
Note-IHC: suggested antigen retrieval with TE buffer pH 9.0; (*) Alternatively, antigen retrieval may be performed with citrate buffer pH 6.0	

Background Information

MEF2D, also named as Myocyte-specific enhancer factor 2D, is a 521 amino acid protein, which belongs to the MEF2 family. MEF2D is expressed in t in myotubes and also in undifferentiated myoblasts. MEF2D as a transcriptional activator which binds specifically to the MEF2 element, found in numerous muscle-specific and stress-induced genes. MEF2D mediates cellular functions not only in skeletal and cardiac muscle development, but also in neuronal differentiation and survival. The calculated molecular weight of MEF2D is 55 kDa, but Phosphorylated MEF2D is 60 kDa.

Notable Publications

Author	Pubmed ID	Journal	Application
Yuji Shiozaki	34517786	Autophagy	WB
Jiali Nie	30488495	J Cell Physiol	WB
Shali Yu	35305351	Ecotoxicol Environ Saf	WB

Storage

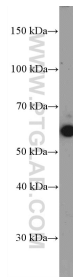
Storage:
Store at -20°C. Stable for one year after shipment.
Storage Buffer:
PBS with 0.02% sodium azide and 50% glycerol pH 7.3.
Aliquoting is unnecessary for -20°C storage

*** 20ul sizes contain 0.1% BSA

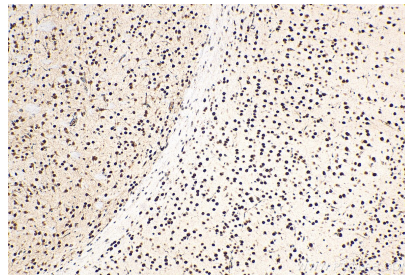
For technical support and original validation data for this product please contact:
T: 1 (888) 4PTGLAB (1-888-478-4522) (toll free in USA), or 1(312) 455-8498 (outside USA)
E: proteintech@ptglab.com
W: ptglab.com

This product is exclusively available under Proteintech Group brand and is not available to purchase from any other manufacturer.

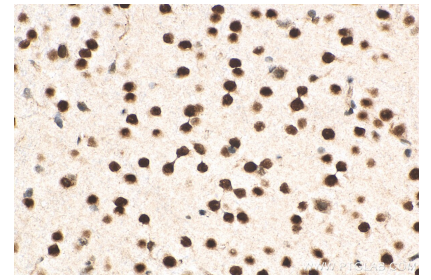
Selected Validation Data



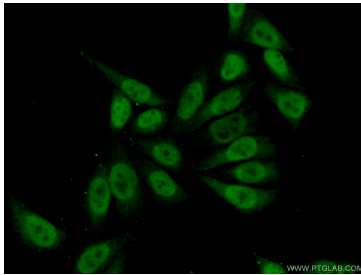
C2C12 cell were subjected to SDS PAGE followed by western blot with 14353-1-AP (MEF2D Antibody) at dilution of 1:600 incubated at room temperature for 1.5 hours.



Immunohistochemical analysis of paraffin-embedded mouse brain tissue slide using 14353-1-AP (MEF2D antibody) at dilution of 1:400 (under 10x lens). Heat mediated antigen retrieval with Tris-EDTA buffer (pH 9.0).



Immunohistochemical analysis of paraffin-embedded mouse brain tissue slide using 14353-1-AP (MEF2D antibody) at dilution of 1:400 (under 40x lens). Heat mediated antigen retrieval with Tris-EDTA buffer (pH 9.0).



Immunofluorescent analysis of (10% Formaldehyde) fixed HeLa cells using 14353-1-AP (MEF2D antibody) at dilution of 1:50 and Alexa Fluor 488-conjugated AffiniPure Goat Anti-Rabbit IgG(H+L).