

For Research Use Only

Casein Kinase 1 Delta Polyclonal antibody

Catalog Number: 14388-1-AP

Featured Product

16 Publications



Basic Information

Catalog Number:

14388-1-AP

Size:

150ul, Concentration: 350 ug/ml by Nanodrop;

Source:

Rabbit

Isotype:

IgG

Immunogen Catalog Number:

AG5856

GenBank Accession Number:

BC003558

GeneID (NCBI):

1453

UNIPROT ID:

P48730

Full Name:

casein kinase 1, delta

Calculated MW:

47 kDa

Observed MW:

47 kDa

Purification Method:

Antigen affinity purification

Recommended Dilutions:

WB 1:5000-1:50000

IP 0.5-4.0 ug for 1.0-3.0 mg of total protein lysate

IHC 1:50-1:500

IF/ICC 1:50-1:500

Applications

Tested Applications:

WB, IHC, IF/ICC, IP, ELISA

Cited Applications:

WB, IHC, IF, IP

Species Specificity:

human, mouse, rat

Cited Species:

human, mouse

Note-IHC: suggested antigen retrieval with TE buffer pH 9.0; (*) Alternatively, antigen retrieval may be performed with citrate buffer pH 6.0

Positive Controls:

WB : HEK-293 cells, HeLa cells, K-562 cells

IP : HeLa cells,

IHC : mouse brain tissue, mouse heart tissue

IF/ICC : U-251 cells, HepG2 cells

Background Information

CSNK1D(casein kinase I isoform delta) is also named as HCKID, CKId and belongs to the casein kinase I subfamily. CKI is a ubiquitous enzyme which has been found in the cytosol, associated with membranes, and in the nucleus. It can phosphorylate a large number of cytosolic, membrane-associated, and nuclear proteins(PMID:8454611). CSNK1D is found to be associated generally with granulovacuolar bodies and tau-containing neurofibrillary tangles in AD, DS, PSP, PDC, PPND, and controls, and Pick bodies and ballooned neurons in PiD(PMID:10924763). It has 2 isoforms produced by alternative splicing.

Notable Publications

Author	Pubmed ID	Journal	Application
Xue Deng	34726688	J Cell Biol	WB
Christine R Keenan	30042678	Front Pharmacol	IHC
Yuting Li	32775325	Front Cell Dev Biol	

Storage

Storage:

Store at -20°C. Stable for one year after shipment.

Storage Buffer:

PBS with 0.02% sodium azide and 50% glycerol, pH7.3

Aliquoting is unnecessary for -20°C storage

*** 20ul sizes contain 0.1% BSA

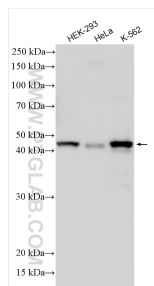
For technical support and original validation data for this product please contact:

T: 1 (888) 4PTGLAB (1-888-478-4522) (toll free in USA), or 1(312) 455-8498 (outside USA)

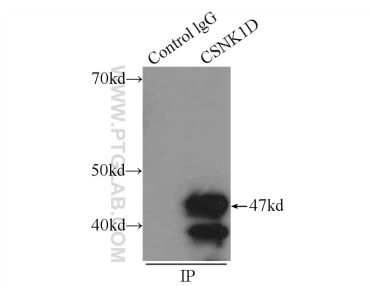
E: proteintech@ptglab.com
W: ptglab.com

This product is exclusively available under Proteintech Group brand and is not available to purchase from any other manufacturer.

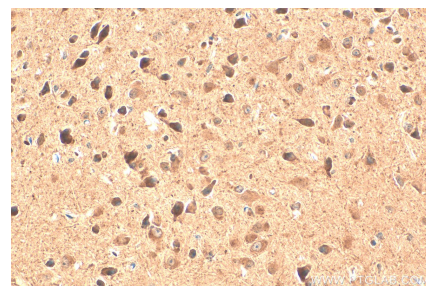
Selected Validation Data



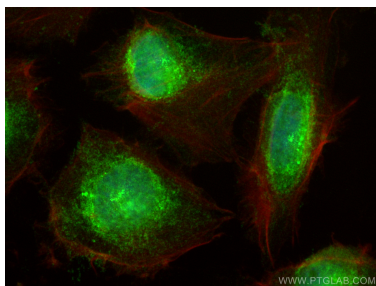
Various lysates were subjected to SDS PAGE followed by western blot with 14388-1-AP (Casein Kinase 1 Delta antibody) at dilution of 1:10000 incubated at room temperature for 1.5 hours.



IP result of anti-Casein Kinase 1 Delta (IP:14388-1-AP, 3ug; Detection:14388-1-AP 1:1000) with HeLa cells lysate 2000ug.



Immunohistochemical analysis of paraffin-embedded mouse brain tissue slide using 14388-1-AP (Casein Kinase 1 Delta antibody) at dilution of 1:200 (under 40x lens). Heat mediated antigen retrieval with Tris-EDTA buffer (pH 9.0).



Immunofluorescent analysis of (4% PFA) fixed U-251 cells using Casein Kinase 1 Delta antibody (14388-1-AP) at dilution of 1:200 and CoraLite®488-Conjugated Goat Anti-Rabbit IgG(H+L) (SA00013-2), CL594-Phalloidin (red).