

For Research Use Only

YTHDC1 Polyclonal antibody

Catalog Number: 14392-1-AP

Featured Product

42 Publications



Basic Information

Catalog Number:

14392-1-AP

Size:

150ul, Concentration: 600 ug/ml by Nanodrop;

Source:

Rabbit

Isotype:

IgG

Immunogen Catalog Number:

AG5882

GenBank Accession Number:

BC053863

GeneID (NCBI):

91746

UNIPROT ID:

Q96MU7

Full Name:

YTH domain containing 1

Calculated MW:

85 kDa

Observed MW:

~100 kDa

Purification Method:

Antigen affinity purification

Recommended Dilutions:

WB 1:500-1:2000

IHC 1:50-1:500

Applications

Tested Applications:

WB, IHC, ELISA

Cited Applications:

WB, IHC, IF, IP, CoIP, RIP

Species Specificity:

human, mouse, rat

Cited Species:

human, mouse, rat

Note-IHC: suggested antigen retrieval with TE buffer pH 9.0; (*) Alternatively, antigen retrieval may be performed with citrate buffer pH 6.0

Positive Controls:

WB : HEK-293 cells, MCF-7 cells, mouse tissue

IHC : mouse brain tissue, human ovary tumor tissue

Background Information

YTHDC1, also named as KIAA1966 or YT521, is a 727 amino acid protein, which contains 1 YTH domain. YTHDC1 localizes in the nucleus and interacts with EMD, KHDRBS1/SAM68, KHDRBS3, TRA2B/SFRS10, SC35 and SF2. YTHDC1 is a RNA-binding protein that regulates alternative splice site selection. The calculated molecular weight of YTHDC1 is 85 kDa, but modified TFEB is about 110 kDa (PMID: 10973987).

Notable Publications

Author	Pubmed ID	Journal	Application
Simon Lesbirel	30218090	Sci Rep	CoIP
Hao Sheng	31504235	Carcinogenesis	WB
Hailing Shi	30401835	Nature	WB

Storage

Storage:

Store at -20°C. Stable for one year after shipment.

Storage Buffer:

PBS with 0.02% sodium azide and 50% glycerol pH 7.3.

Aliquoting is unnecessary for -20°C storage

*** 20ul sizes contain 0.1% BSA

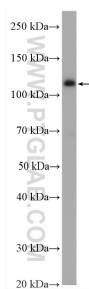
For technical support and original validation data for this product please contact:

T: 1 (888) 4PTGLAB (1-888-478-4522) (toll free in USA), or 1(312) 455-8498 (outside USA)

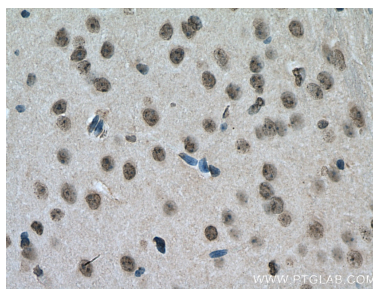
E: proteintech@ptglab.com
W: ptglab.com

This product is exclusively available under Proteintech Group brand and is not available to purchase from any other manufacturer.

Selected Validation Data



HEK-293 cells were subjected to SDS PAGE followed by western blot with 14392-1-AP (YTHDC1 antibody) at dilution of 1:1000 incubated at room temperature for 1.5 hours.



Immunohistochemical analysis of paraffin-embedded mouse brain tissue slide using 14392-1-AP (YTHDC1 antibody) at dilution of 1:200 (under 40x lens). Heat mediated antigen retrieval with Tris-EDTA buffer (pH 9.0).