

For Research Use Only

# CLCNKA Polyclonal antibody

Catalog Number: 14402-1-AP



## Basic Information

**Catalog Number:**  
14402-1-AP

**Size:**  
150ul, Concentration: 400 µg/ml by Nanodrop and 240 µg/ml by Bradford method using BSA as the standard;

**Source:**  
Rabbit

**Isotype:**  
IgG

**Immunogen Catalog Number:**  
AG5647

**GenBank Accession Number:**  
BC048282

**GeneID (NCBI):**  
1187

**Full Name:**  
chloride channel Ka

**Calculated MW:**  
75 kDa

**Observed MW:**  
70 kDa

**Purification Method:**  
Antigen affinity purification

**Recommended Dilutions:**  
WB 1:1000-1:4000  
IP 0.5-4.0 ug for IP and 1:500-1:1000 for WB  
IHC 1:400-1:1000

## Applications

**Tested Applications:**  
IHC, IP, WB, ELISA

**Species Specificity:**  
human, mouse, rat

**Note-IHC: suggested antigen retrieval with TE buffer pH 9.0; (\*) Alternatively, antigen retrieval may be performed with citrate buffer pH 6.0**

**Positive Controls:**

**WB:** HEK-293 cells, human kidney tissue, mouse pancreas tissue, mouse kidney tissue

**IP:** HEK-293 cells,

**IHC:** human kidney tissue, human placenta tissue, human testis tissue, human skin tissue, human spleen tissue, human lung tissue, human ovary tissue

## Background Information

### Storage

**Storage:**

Store at -20°C. Stable for one year after shipment.

**Storage Buffer:**

PBS with 0.02% sodium azide and 50% glycerol pH 7.3.

Aliquoting is unnecessary for -20°C storage

\*\*\* 20ul sizes contain 0.1% BSA

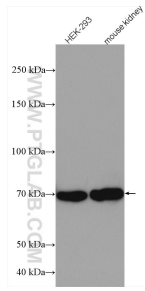
For technical support and original validation data for this product please contact:

T: 1 (888) 4PTGLAB (1-888-478-4522) (toll free in USA), or 1(312) 455-8498 (outside USA)

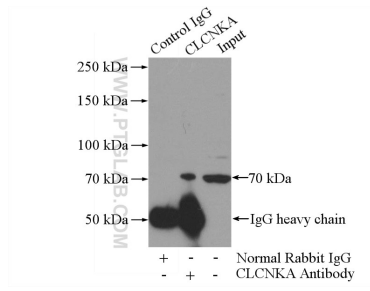
E: proteintech@ptglab.com  
W: ptglab.com

This product is exclusively available under Proteintech Group brand and is not available to purchase from any other manufacturer.

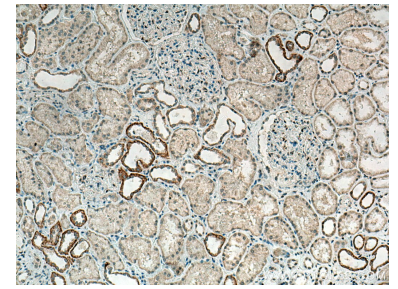
## Selected Validation Data



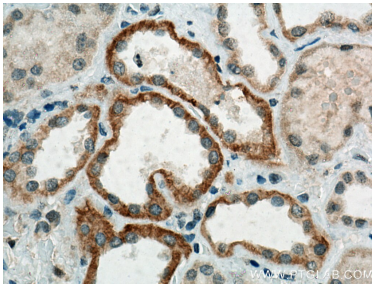
Various lysates were subjected to SDS PAGE followed by western blot with 14402-1-AP (CLCNKA antibody) at dilution of 1:2000 incubated at room temperature for 1.5 hours.



IP Result of anti-CLCNKA (IP:14402-1-AP, 5ug; Detection:14402-1-AP 1:500) with HEK-293 cells lysate 880ug.



Immunohistochemical analysis of paraffin-embedded human kidney tissue slide using 14402-1-AP (CLCNKA antibody) at dilution of 1:800 (under 10x lens). Heat mediated antigen retrieval with Tris-EDTA buffer (pH 9.0).



Immunohistochemical analysis of paraffin-embedded human kidney tissue slide using 14402-1-AP (CLCNKA antibody) at dilution of 1:800 (under 40x lens). Heat mediated antigen retrieval with Tris-EDTA buffer (pH 9.0).