

For Research Use Only

PEG10 Polyclonal antibody

Catalog Number: 14412-1-AP

9 Publications



Basic Information

Catalog Number:

14412-1-AP

Size:

150ul, Concentration: 850 ug/ml by Nanodrop;

Source:

Rabbit

Isotype:

IgG

Immunogen Catalog Number:

AG5754

GenBank Accession Number:

BC050659

GeneID (NCBI):

23089

UNIPROT ID:

Q86TG7

Full Name:

paternally expressed 10

Calculated MW:

80 kDa

Observed MW:

50 kDa, 100 kDa

Purification Method:

Antigen affinity purification

Recommended Dilutions:

WB 1:500-1:3000

IHC 1:500-1:2000

IF/ICC 1:200-1:800

Applications

Tested Applications:

WB, IHC, IF/ICC, ELISA

Cited Applications:

WB, IHC, IF, ColP

Species Specificity:

human, mouse

Cited Species:

human

Note-IHC: suggested antigen retrieval with TE buffer pH 9.0; (*) Alternatively, antigen retrieval may be performed with citrate buffer pH 6.0

Positive Controls:

WB : HepG2 cells, L02 cells, PC-13 cells, mouse liver tissue

IHC : mouse skin tissue,

IF/ICC : HeLa cells,

Notable Publications

| Author | Pubmed ID | Journal | Application |
|------------------|-----------|--------------------|-------------|
| Hugo Gonzalez | 35063085 | Cell | IHC,IF |
| Bin Zhang | 34876700 | Acta Pharmacol Sin | WB |
| Will Campodonico | 39775359 | PLoS One | WB,ColP |

Storage

Storage:

Store at -20°C. Stable for one year after shipment.

Storage Buffer:

PBS with 0.02% sodium azide and 50% glycerol pH 7.3.

Aliquoting is unnecessary for -20°C storage

*** 20ul sizes contain 0.1% BSA

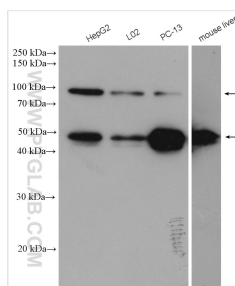
For technical support and original validation data for this product please contact:

T: 1 (888) 4PTGLAB (1-888-478-4522) (toll free in USA), or 1(312) 455-8498 (outside USA)

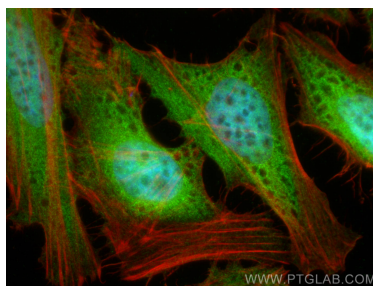
E: proteintech@ptglab.com
W: ptglab.com

This product is exclusively available under Proteintech Group brand and is not available to purchase from any other manufacturer.

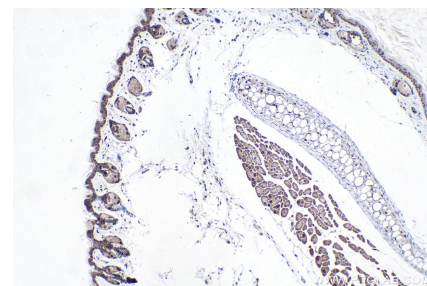
Selected Validation Data



Various lysates were subjected to SDS PAGE followed by western blot with 14412-1-AP (PEG10 antibody) at dilution of 1:1500 incubated at room temperature for 1.5 hours.



Immunofluorescent analysis of (4% PFA) fixed HeLa cells using PEG10 antibody (14412-1-AP) at dilution of 1:400 and CoraLite®488-Conjugated AffiniPure Goat Anti-Rabbit IgG(H+L), CL594-Phalloidin (red).



Immunohistochemical analysis of paraffin-embedded mouse skin tissue slide using 14412-1-AP (PEG10 antibody) at dilution of 1:1000 (under 10x lens). Heat mediated antigen retrieval with Tris-EDTA buffer (pH 9.0).