

For Research Use Only

PIBF1 Polyclonal antibody

Catalog Number: 14413-1-AP

Featured Product

6 Publications



Basic Information

Catalog Number: 14413-1-AP	GenBank Accession Number: BC051911	Purification Method: Antigen affinity purification
Size: 150ul, Concentration: 400 µg/ml by Nanodrop and 233 µg/ml by Bradford method using BSA as the standard;	GeneID (NCBI): 10464	Recommended Dilutions: WB 1:1000-1:6000 IP 0.5-4.0 ug for IP and 1:500-1:2000 for WB
Source: Rabbit	Full Name: progesterone immunomodulatory binding factor 1	Calculated MW: 90 kDa
Isotype: IgG	Observed MW: 90 kDa	
Immunogen Catalog Number: AG5755		

Applications

Tested Applications: IF, IP, WB, ELISA	Positive Controls: WB : HEK-293 cells, MCF-7 cells, K-562 cells, HeLa cells
Cited Applications: IF, IP, WB	IP : HEK-293 cells,
Species Specificity: human	IF : HEK-293 cells,
Cited Species: human	

Background Information

PIBF1 is induced by the steroid hormone progesterone and plays a role in the maintenance of pregnancy. PIBF1 regulates multiple facets of the immune system to promote normal pregnancy including cytokine synthesis, natural killer (NK) cell activity, and arachidonic acid metabolism. Low serum levels of this protein have been associated with spontaneous pre-term labor in humans. PIBF1 may promote the proliferation, migration and invasion of glioma.

Notable Publications

Author	Pubmed ID	Journal	Application
Marine H Laporte	36125182	EMBO J	IF
Pierrick Le Borgne	36070319	PLoS Biol	IF
Dhivya Kumar	34241634	J Cell Biol	WB

Storage

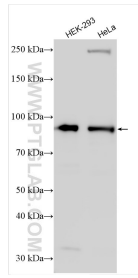
Storage:
Store at -20°C. Stable for one year after shipment.
Storage Buffer:
PBS with 0.02% sodium azide and 50% glycerol pH 7.3.
Aliquoting is unnecessary for -20°C storage

*** 20ul sizes contain 0.1% BSA

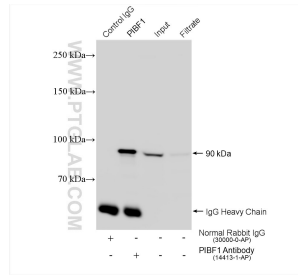
For technical support and original validation data for this product please contact:
T: 1 (888) 4PTGLAB (1-888-478-4522) (toll free in USA), or 1(312) 455-8498 (outside USA)
E: proteintech@ptglab.com
W: ptglab.com

This product is exclusively available under Proteintech Group brand and is not available to purchase from any other manufacturer.

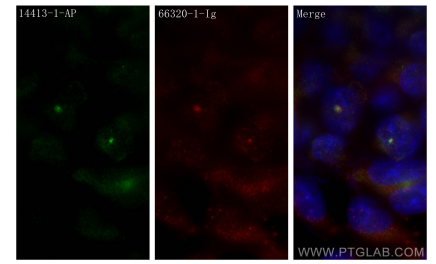
Selected Validation Data



Various lysates were subjected to SDS PAGE followed by western blot with 14413-1-AP (PIBF1 antibody) at dilution of 1:3000 incubated at room temperature for 1.5 hours.



IP result of anti-PIBF1 (IP:14413-1-AP, 4 μ g; Detection:14413-1-AP 1:1000) with HEK-293 cells lysate 1400 μ g.



Immunofluorescent analysis of (-20°C Methanol) fixed HEK-293 cells using PIBF1 antibody (14413-1-AP) at dilution of 1:400 and CoraLite@488-Conjugated AffiniPure Goat Anti-Rabbit IgG(H+L), Gamma Tubulin antibody (66320-1-Ig, Clone: 3F9H8, red).