

For Research Use Only

NDUFS6 Polyclonal antibody

Catalog Number: 14417-1-AP **8 Publications**



Basic Information

| | | |
|---|--|---|
| Catalog Number: 14417-1-AP | GenBank Accession Number: BC046155 | Purification Method: Antigen affinity purification |
| Size: 150ul , Concentration: 500 µg/ml by Nanodrop; | GeneID (NCBI): 4726 | Recommended Dilutions: WB 1:1000-1:5000 IP 0.5-4.0 ug for IP and 1:200-1:1000 for WB |
| Source: Rabbit | Full Name: NADH dehydrogenase (ubiquinone) Fe-S protein 6, 13kDa (NADH-coenzyme Q reductase) | IHC 1:20-1:200 IF 1:50-1:500 |
| Isotype: IgG | Calculated MW: 14 kDa | |
| Immunogen Catalog Number: AG5762 | Observed MW: 13 kDa | |

Applications

Tested Applications:
IF, IHC, IP, WB, ELISA

Cited Applications:
WB

Species Specificity:
human, mouse, rat

Cited Species:
human, mouse, rat

Note-IHC: suggested antigen retrieval with TE buffer pH 9.0; (*) Alternatively, antigen retrieval may be performed with citrate buffer pH 6.0

Positive Controls:

WB : HeLa cells, rat liver tissue, human liver tissue, human heart tissue, mouse heart tissue, mouse liver tissue

IP : mouse liver tissue,

IHC : human prostate cancer tissue,

IF : HeLa cells,

Background Information

NDUFS6(NADH dehydrogenase [ubiquinone] iron-sulfur protein 6, mitochondrial) is also named as CI-13kD-A, NADH-ubiquinone oxidoreductase 13 kDa-A subunit and belongs to the complex I NDUFS6 subunit family. It is an accessory subunit of the mitochondrial membrane respiratory chain NADH dehydrogenase (Complex I), that is believed not to be involved in catalysis.

Notable Publications

| Author | Pubmed ID | Journal | Application |
|---------------|-----------|-------------|-------------|
| Rufeng Zhang | 31530015 | FASEB J | WB |
| Yueh-Lin Tsai | 32381627 | Genes Dev | |
| Yanting You | 28677739 | Mol Med Rep | WB |

Storage

Storage:

Store at -20°C. Stable for one year after shipment.

Storage Buffer:

PBS with 0.02% sodium azide and 50% glycerol pH 7.3.

Aliquoting is unnecessary for -20°C storage

***** 20ul sizes contain 0.1% BSA**

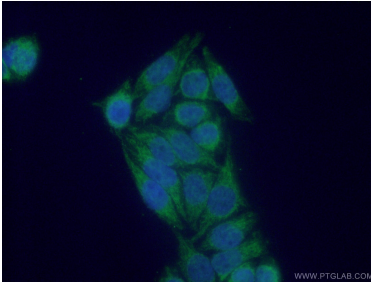
For technical support and original validation data for this product please contact:

T: 1 (888) 4PTGLAB (1-888-478-4522) (toll free in USA), or 1(312) 455-8498 (outside USA)

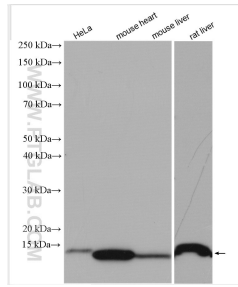
E: proteintech@ptglab.com
W: ptglab.com

This product is exclusively available under Proteintech Group brand and is not available to purchase from any other manufacturer.

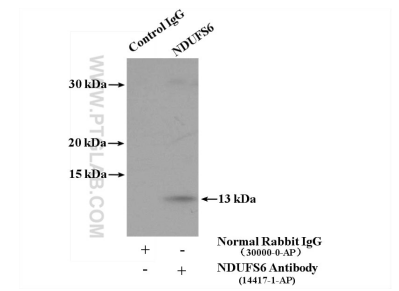
Selected Validation Data



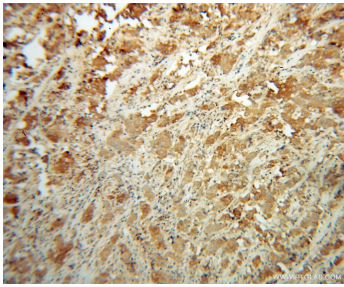
Immunofluorescent analysis of (4% PFA) fixed HeLa cells using 14417-1-AP (NDUFS6 antibody) at dilution of 1:50 and Alexa Fluor 488-conjugated AffiniPure Goat Anti-Rabbit IgG(H+L).



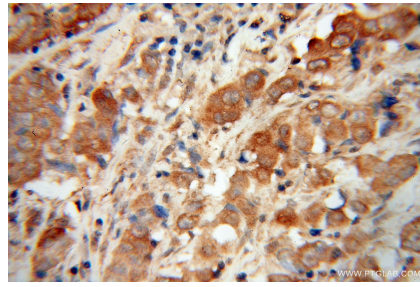
Various lysates were subjected to SDS PAGE followed by western blot with 14417-1-AP (NDUFS6 antibody) at dilution of 1:2500 incubated at room temperature for 1.5 hours.



IP result of anti-NDUFS6 (IP:14417-1-AP, 4ug; Detection:14417-1-AP 1:300) with mouse liver tissue lysate 3200 ug.



Immunohistochemical analysis of paraffin-embedded human prostate cancer using 14417-1-AP (NDUFS6 antibody) at dilution of 1:100 (under 10x lens).



Immunohistochemical analysis of paraffin-embedded human prostate cancer using 14417-1-AP (NDUFS6 antibody) at dilution of 1:100 (under 40x lens).