

For Research Use Only

# NDUFS6 Polyclonal antibody, PBS Only

Catalog Number: 14417-1-PBS



## Basic Information

**Catalog Number:**

14417-1-PBS

**Size:**

100ug, Concentration: 1 mg/ml by Nanodrop;

**Source:**

Rabbit

**Isotype:**

IgG

**Immunogen Catalog Number:**

AG5762

**GenBank Accession Number:**

BC046155

**GeneID (NCBI):**

4726

**UNIPROT ID:**

O75380

**Full Name:**

NADH dehydrogenase (ubiquinone)  
Fe-S protein 6, 13kDa (NADH-  
coenzyme Q reductase)

**Calculated MW:**

14 kDa

**Observed MW:**

13 kDa

**Purification Method:**

Antigen affinity purification

## Applications

**Tested Applications:**

WB, IHC, IF/ICC, IP, Indirect ELISA

**Species Specificity:**

human, mouse, rat

## Background Information

NDUFS6(NADH dehydrogenase [ubiquinone] iron-sulfur protein 6, mitochondrial) is also named as 1CI-13kD-A, NADH-ubiquinone oxidoreductase 13 kDa-A subunit and belongs to the complex I NDUFS6 subunit family. It is an accessory subunit of the mitochondrial membrane respiratory chain NADH dehydrogenase (Complex I), that is believed not to be involved in catalysis.

## Storage

**Storage:**

Store at -80°C.

**Storage Buffer:**

PBS only, pH7.3

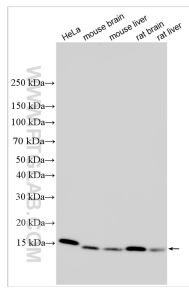
For technical support and original validation data for this product please contact:

T: 1 (888) 4PTGLAB (1-888-478-4522) (toll free  
in USA), or 1(312) 455-8498 (outside USA)

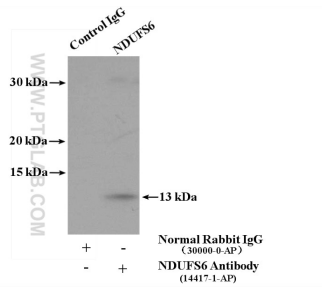
E: [proteintech@ptglab.com](mailto:proteintech@ptglab.com)  
W: [ptglab.com](http://ptglab.com)

This product is exclusively available under Proteintech Group brand and is not available to purchase from any other manufacturer.

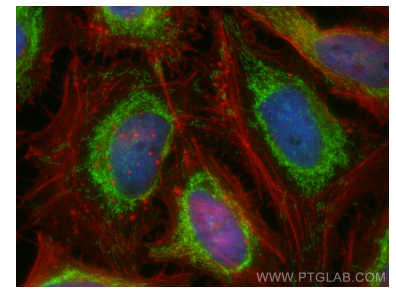
## Selected Validation Data



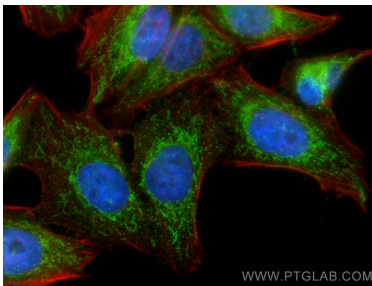
Various lysates were subjected to SDS PAGE followed by western blot with 14417-1-AP (NDUFS6 antibody) at dilution of 1:4000 incubated at room temperature for 1.5 hours. This data was developed using the same antibody clone with 14417-1-PBS in a different storage buffer formulation.



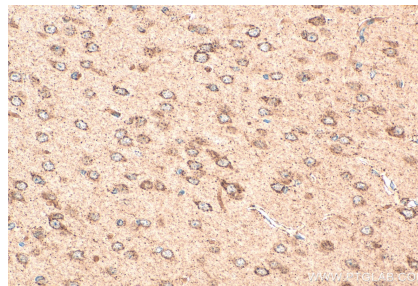
IP result of anti-NDUFS6 (IP:14417-1-AP, 4ug; Detection:14417-1-AP 1:300) with mouse liver tissue lysate 3200 ug. This data was developed using the same antibody clone with 14417-1-PBS in a different storage buffer formulation.



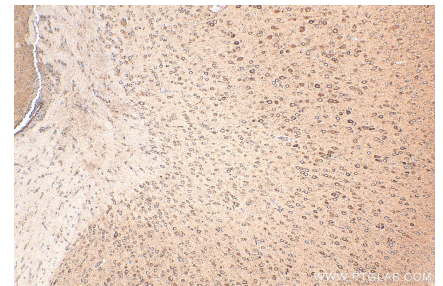
Immunofluorescent analysis of (4% PFA) fixed HeLa cells using NDUFS6 antibody (14417-1-AP) at dilution of 1:800 and CoraLite@488-Conjugated Goat Anti-Rabbit IgG(H+L) (SA00013-2), CL594-phalloidin (red). This data was developed using the same antibody clone with 14417-1-PBS in a different storage buffer formulation.



Immunofluorescent analysis of (4% PFA) fixed HepG2 cells using NDUFS6 antibody (14417-1-AP) at dilution of 1:400 and CoraLite@488-Conjugated AffiniPure Goat Anti-Rabbit IgG(H+L), CL594-Phalloidin (red). This data was developed using the same antibody clone with 14417-1-PBS in a different storage buffer formulation.



Immunohistochemical analysis of paraffin-embedded mouse brain tissue slide using 14417-1-AP (NDUFS6 antibody) at dilution of 1:500 (under 40x lens). Heat mediated antigen retrieval with Tris-EDTA buffer (pH 9.0). This data was developed using the same antibody clone with 14417-1-PBS in a different storage buffer formulation.



Immunohistochemical analysis of paraffin-embedded mouse brain tissue slide using 14417-1-AP (NDUFS6 antibody) at dilution of 1:500 (under 10x lens). Heat mediated antigen retrieval with Tris-EDTA buffer (pH 9.0). This data was developed using the same antibody clone with 14417-1-PBS in a different storage buffer formulation.