

For Research Use Only

CHSY1 Polyclonal antibody, PBS Only

Catalog Number: 14420-1-PBS

Featured Product



Basic Information

Catalog Number:

14420-1-PBS

Size:

100ug, Concentration: 1 mg/ml by Nanodrop;

Source:

Rabbit

Isotype:

IgG

Immunogen Catalog Number:

AG5766

GenBank Accession Number:

BC046247

GeneID (NCBI):

22856

UNIPROT ID:

Q86X52

Full Name:

chondroitin sulfate synthase 1

Calculated MW:

92 kDa

Observed MW:

60-92 kDa

Purification Method:

Antigen affinity purification

Applications

Tested Applications:

WB, IHC, Indirect ELISA

Species Specificity:

human, mouse

Storage

Storage:

Store at -80°C.

Storage Buffer:

PBS Only

For technical support and original validation data for this product please contact:

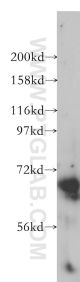
T: 1 (888) 4PTGLAB (1-888-478-4522) (toll free in USA), or 1(312) 455-8498 (outside USA)

E: proteintech@ptglab.com

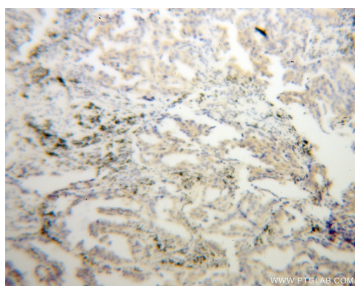
W: ptglab.com

This product is exclusively available under Proteintech Group brand and is not available to purchase from any other manufacturer.

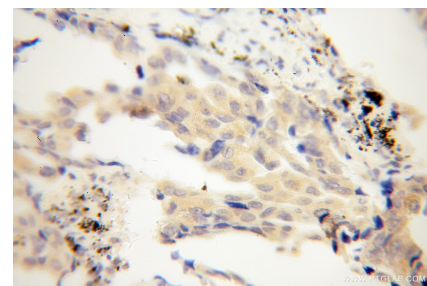
Selected Validation Data



mouse spleen tissue were subjected to SDS PAGE followed by western blot with 14420-1-AP (CHSY1 antibody) at dilution of 1:500 incubated at room temperature for 1.5 hours. This data was developed using the same antibody clone with 14420-1-PBS in a different storage buffer formulation.



Immunohistochemical analysis of paraffin-embedded human lung cancer using 14420-1-AP (CHSY1 antibody) at dilution of 1:100 (under 10x lens). This data was developed using the same antibody clone with 14420-1-PBS in a different storage buffer formulation.



Immunohistochemical analysis of paraffin-embedded human lung cancer using 14420-1-AP (CHSY1 antibody) at dilution of 1:100 (under 40x lens). This data was developed using the same antibody clone with 14420-1-PBS in a different storage buffer formulation.