

TIMELESS Polyclonal antibody

Catalog Number: 14421-1-AP

Featured Product

5 Publications

Basic Information

Catalog Number: 14421-1-AP	GenBank Accession Number: BC050557	Purification Method: Antigen affinity purification
Size: 150ul , Concentration: 227 µg/ml by Nanodrop and 227 µg/ml by Bradford method using BSA as the standard;	GeneID (NCBI): 8914	Recommended Dilutions: WB 1:1000-1:4000 IHC 1:20-1:200 IF 1:50-1:500
Source: Rabbit	Full Name: timeless homolog (Drosophila)	
Isotype: IgG	Calculated MW: 139 kDa	
Immunogen Catalog Number: AG5767	Observed MW: 140-150 kDa	

Applications

Tested Applications: IF, IHC, WB, ELISA	Positive Controls: WB : HEK-293 cells, NIH/3T3 cells, A549 cells, HeLa cells, Jurkat cells, RAW 264.7 cells IHC : human spleen tissue, human brain tissue, human heart tissue, human kidney tissue, human ovary tissue, human placenta tissue, human testis tissue IF : HeLa cells,
Cited Applications: IHC, WB	
Species Specificity: human, mouse	
Cited Species: human	
Note-IHC: suggested antigen retrieval with TE buffer pH 9.0; (*) Alternatively, antigen retrieval may be performed with citrate buffer pH 6.0	

Background Information

TIMELESS1 (TIM1) gene encodes protein timeless homolog belonging to timeless family. TIM1 is localized in nucleus and regulated by cell cycle. It expresses high levels in S, G2 and M phases, and low in G0 and G1 phases. TIM1 is involved in the circadian rhythm autoregulatory loop and is a crucial component of the circadian core oscillator, which includes the CRY proteins, CLOCK, NPAS2, etc. It is also involved in cell survival after DNA damage or replication stress and reported to play important role in epithelial cell morphogenesis and formation of branching tubules.

Notable Publications

Author	Pubmed ID	Journal	Application
Fangfang Li	35715407	Cell Death Dis	WB
Sai-Lan Liu	28583847	Cancer Lett	WB, IHC
Zeyu Wang	33442944	Cell Prolif	WB

Storage

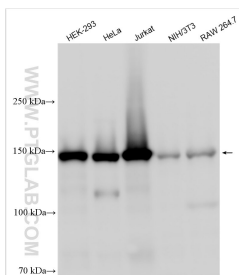
Storage:
Store at -20°C. Stable for one year after shipment.
Storage Buffer:
PBS with 0.02% sodium azide and 50% glycerol pH 7.3.
Aliquoting is unnecessary for -20°C storage

*** 20ul sizes contain 0.1% BSA

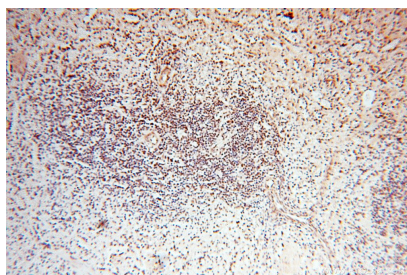
For technical support and original validation data for this product please contact:
T: 1 (888) 4PTGLAB (1-888-478-4522) (toll free in USA), or 1(312) 455-8498 (outside USA)
E: proteintech@ptglab.com
W: ptglab.com

This product is exclusively available under Proteintech Group brand and is not available to purchase from any other manufacturer.

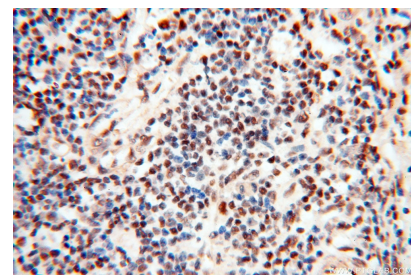
Selected Validation Data



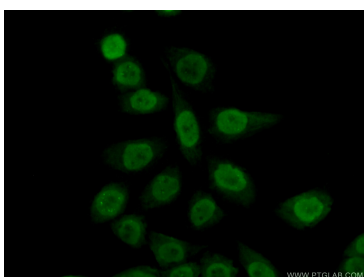
Various lysates were subjected to SDS PAGE followed by western blot with 14421-1-AP (TIMELESS antibody) at dilution of 1:2000 incubated at room temperature for 1.5 hours.



Immunohistochemical analysis of paraffin-embedded human spleen using 14421-1-AP (TIMELESS antibody) at dilution of 1:50 (under 10x lens).



Immunohistochemical analysis of paraffin-embedded human spleen using 14421-1-AP (TIMELESS antibody) at dilution of 1:50 (under 40x lens).



Immunofluorescent analysis of (10% Formaldehyde) fixed HeLa cells using 14421-1-AP (TIMELESS antibody) at dilution of 1:50 and Alexa Fluor 488-conjugated AffiniPure Goat Anti-Rabbit IgG(H+L).