

For Research Use Only

TAX1BP1 Polyclonal antibody

Catalog Number: 14424-1-AP

Featured Product

19 Publications



Basic Information

Catalog Number:

14424-1-AP

Size:

150ul, Concentration: 1000 ug/ml by Nanodrop;

Source:

Rabbit

Isotype:

IgG

Immunogen Catalog Number:

AG5789

GenBank Accession Number:

BC050358

GeneID (NCBI):

8887

UNIPROT ID:

Q86VP1

Full Name:

Tax1 (human T-cell leukemia virus type I) binding protein 1

Calculated MW:

91 kDa

Observed MW:

90 kDa

Purification Method:

Antigen affinity purification

Recommended Dilutions:

WB 1:1000-1:5000

IHC 1:250-1:1000

IF/ICC 1:200-1:800

Applications

Tested Applications:

WB, IHC, IF/ICC, ELISA

Cited Applications:

WB, IF, IP

Species Specificity:

human

Cited Species:

human, mouse

Note-IHC: suggested antigen retrieval with TE buffer pH 9.0; (*) Alternatively, antigen retrieval may be performed with citrate buffer pH 6.0

Positive Controls:

WB : A549 cells, HeLa cells, HepG2 cells

IHC : human skin cancer tissue,

IF/ICC : HeLa cells,

Background Information

TAX1BP1 (also named as T6BP and TXBP151) inhibits TNF-induced apoptosis by mediating the TNFAIP3 anti-apoptotic activity. It is degraded by caspase-3-like family proteins upon TNF-induced apoptosis. TAX1BP1 may also play a role in the pro-inflammatory cytokine IL-1 signaling cascade. TAX1BP1 binds TRAF6 but not TRAFs 1-5.

Notable Publications

Author	Pubmed ID	Journal	Application
Jing-Ying Li	36274483	Int Immunopharmacol	WB
Jiajia Pan	35618171	Fish Shellfish Immunol	WB
Wenxian Wu	33779513	Autophagy	WB

Storage

Storage:

Store at -20°C. Stable for one year after shipment.

Storage Buffer:

PBS with 0.02% sodium azide and 50% glycerol pH 7.3.

Aliquoting is unnecessary for -20°C storage

*** 20ul sizes contain 0.1% BSA

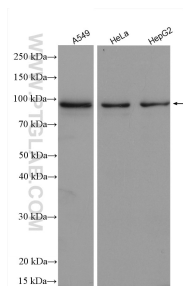
For technical support and original validation data for this product please contact:

T: 1 (888) 4PTGLAB (1-888-478-4522) (toll free in USA), or 1(312) 455-8498 (outside USA)

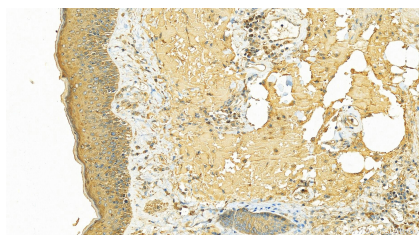
E: proteintech@ptglab.com
W: ptglab.com

This product is exclusively available under Proteintech Group brand and is not available to purchase from any other manufacturer.

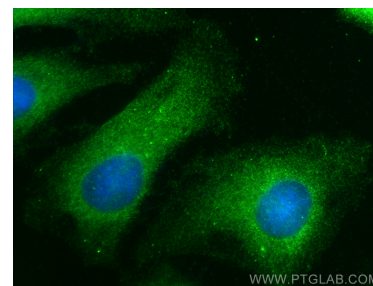
Selected Validation Data



Various lysates were subjected to SDS PAGE followed by western blot with 14424-1-AP (TAX1BP1 antibody) at dilution of 1:2500 incubated at room temperature for 1.5 hours.



Immunohistochemical analysis of paraffin-embedded skin cancer slide using 14424-1-AP (TAX1BP1 antibody) at dilution of 1:500 (under 20x lens). Heat mediated antigen retrieval with Tris-EDTA buffer (pH 9.0).



Immunofluorescent analysis of (-20°C Ethanol) fixed HeLa cells using TAX1BP1 antibody (14424-1-AP) at dilution of 1:400 and Multi-rAb CoraLite® Plus 488-Goat Anti-Rabbit Recombinant Secondary Antibody (H+L) (RGAR002).