

For Research Use Only

TAX1BP1 Polyclonal antibody, PBS Only

Catalog Number: 14424-1-PBS

Featured Product



Basic Information

Catalog Number:

14424-1-PBS

Size:

100ug, Concentration: 1 mg/ml by Nanodrop;

Source:

Rabbit

Isotype:

IgG

Immunogen Catalog Number:

AG5789

GenBank Accession Number:

BC050358

GeneID (NCBI):

8887

UNIPROT ID:

Q86VP1

Full Name:

Tax1 (human T-cell leukemia virus type I) binding protein 1

Calculated MW:

91 kDa

Observed MW:

90 kDa

Purification Method:

Antigen affinity purification

Applications

Tested Applications:

WB, IHC, IF/ICC, Indirect ELISA

Species Specificity:

human

Background Information

TAX1BP1 (also named as T6BP and TXBP151) inhibits TNF-induced apoptosis by mediating the TNFAIP3 anti-apoptotic activity. It is degraded by caspase-3-like family proteins upon TNF-induced apoptosis. TAX1BP1 may also play a role in the pro-inflammatory cytokine IL-1 signaling cascade. TAX1BP1 binds TRAF6 but not TRAFs 1-5.

Storage

Storage:

Store at -80°C.

Storage Buffer:

PBS Only

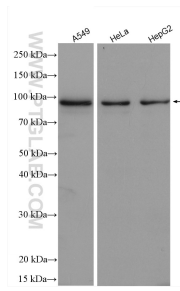
For technical support and original validation data for this product please contact:

T: 1 (888) 4PTGLAB (1-888-478-4522) (toll free in USA), or 1(312) 455-8498 (outside USA)

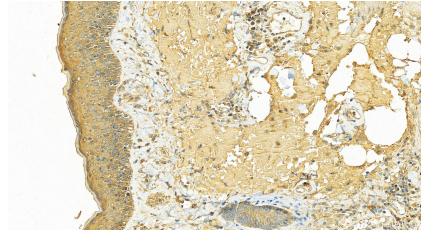
E: proteintech@ptglab.com
W: ptglab.com

This product is exclusively available under Proteintech Group brand and is not available to purchase from any other manufacturer.

Selected Validation Data



Various lysates were subjected to SDS PAGE followed by western blot with 14424-1-AP (TAX1BP1 antibody) at dilution of 1:2500 incubated at room temperature for 1.5 hours. This data was developed using the same antibody clone with 14424-1-PBS in a different storage buffer formulation.



Immunohistochemical analysis of paraffin-embedded skin cancer slide using 14424-1-AP (TAX1BP1 antibody) at dilution of 1:500 (under 20x lens). Heat mediated antigen retrieval with Tris-EDTA buffer (pH 9.0). This data was developed using the same antibody clone with 14424-1-PBS in a different storage buffer formulation.

Immunofluorescent analysis of (-20°C Ethanol) fixed HeLa cells using TAX1BP1 antibody (14424-1-AP) at dilution of 1:400 and Multi-rAb Coralite® Plus 488-Goat Anti-Rabbit Recombinant Secondary Antibody (H+L) (RGAR002). This data was developed using the same antibody clone with 14424-1-PBS in a different storage buffer formulation.