

For Research Use Only

KDM5C Polyclonal antibody

Catalog Number: 14426-1-AP

6 Publications



Basic Information

Catalog Number:

14426-1-AP

Size:

150ul, Concentration: 800 ug/ml by Nanodrop;

Source:

Rabbit

Isotype:

IgG

Immunogen Catalog Number:

AG5791

GenBank Accession Number:

BC054499

GeneID (NCBI):

8242

UNIPROT ID:

P41229

Full Name:

lysine (K)-specific demethylase 5C

Calculated MW:

176 kDa

Observed MW:

171-180 kDa

Purification Method:

Antigen affinity purification

Recommended Dilutions:

WB 1:1000-1:5000

IF/ICC 1:50-1:500

Applications

Tested Applications:

WB, IF/ICC, ELISA

Cited Applications:

WB, IF, IP

Species Specificity:

human, mouse, rat

Cited Species:

human, mouse

Positive Controls:

WB : HeLa cells, Jurkat cells, MCF-7 cells

IF/ICC : HeLa cells,

Background Information

KDM5C belongs to the ARID protein family that harbors conserved DNA-binding motifs and acts as a histone H3 lysine 4 demethylase, suggesting a potential role in epigenetic regulation during development, cell differentiation (PMID:21575681). KDM5C protein is homologous to three other proteins of the human JARID1 family (JARID1A, JARID1B and JARID1C). This family shares several evolutionarily conserved domains, including the catalytic JmjC domain, JmjN domain, Arid/Bright domain, C5HC2 zinc-finger domain and two plant homeodomains (PHD), a motif that binds methyl-lysine residues (PMID:17320160,17320161).

Notable Publications

Author	Pubmed ID	Journal	Application
Shi-Ting Li	32694775	Nat Metab	WB
Wenxia Xu	29989047	Int J Biol Sci	WB
Anna K Kania	34880105	Immunohorizons	WB

Storage

Storage:

Store at -20°C. Stable for one year after shipment.

Storage Buffer:

PBS with 0.02% sodium azide and 50% glycerol pH 7.3.

Aliquoting is unnecessary for -20°C storage

*** 20ul sizes contain 0.1% BSA

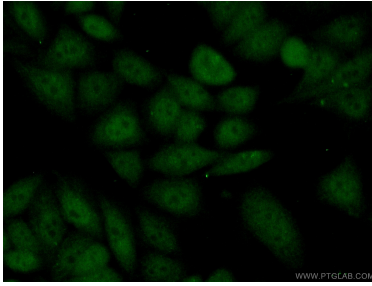
For technical support and original validation data for this product please contact:

T: 1 (888) 4PTGLAB (1-888-478-4522) (toll free in USA), or 1(312) 455-8498 (outside USA)

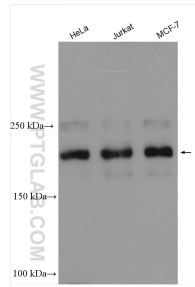
E: proteintech@ptglab.com
W: ptglab.com

This product is exclusively available under Proteintech Group brand and is not available to purchase from any other manufacturer.

Selected Validation Data



Immunofluorescent analysis of (10% Formaldehyde) fixed HeLa cells using 14426-1-AP (KDM5C antibody) at dilution of 1:50 and Alexa Fluor 488-conjugated Goat Anti-Rabbit IgG(H+L).



Various lysates were subjected to SDS PAGE followed by western blot with 14426-1-AP (KDM5C antibody) at dilution of 1:2500 incubated at room temperature for 1.5 hours.