

For Research Use Only

GPX4 Polyclonal antibody

Catalog Number: 14432-1-AP **123 Publications**



Basic Information

Catalog Number: 14432-1-AP	GenBank Accession Number: BC022071	Purification Method: Antigen affinity purification
Size: 150ul , Concentration: 800 µg/ml by Nanodrop;	GeneID (NCBI): 2879	Recommended Dilutions: WB 1:2000-1:12000 IF 1:50-1:500
Source: Rabbit	UNIPROT ID: P36969	
Isotype: IgG	Full Name: glutathione peroxidase 4 (phospholipid hydroperoxidase)	
Immunogen Catalog Number: AG5809	Calculated MW: 22 kDa	
	Observed MW: 20-23 kDa	

Applications

Tested Applications: IF, WB, ELISA	Positive Controls: WB : mouse testis tissue, rat testis tissue IF : HeLa cells,
Cited Applications: CoIP, IF, IHC, WB	
Species Specificity: human, mouse, rat	
Cited Species: human, chicken, mouse, pig	

Background Information

GPX4 (Phospholipid hydroperoxide glutathione peroxidase, mitochondrial) protects cells against membrane lipid peroxidation and cell death. Required for normal sperm development and male fertility. It has two isoforms about 20KDa and 22KDa, respectively. GPX4 is a monomer, but it has a tendency to form higher mass oligomers (PMID:17630701). It presents primarily in testis.

Notable Publications

Author	Pubmed ID	Journal	Application
Zixin Min	30247797	J Cell Mol Med	IHC,WB
Jiayu Song	36193064	Oxid Med Cell Longev	WB,IHC
Shiao Tong	36156371	Transl Oncol	WB

Storage

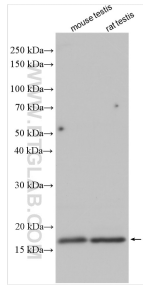
Storage:
Store at -20°C. Stable for one year after shipment.
Storage Buffer:
PBS with 0.02% sodium azide and 50% glycerol pH 7.3.
Aliquoting is unnecessary for -20°C storage

*** 20ul sizes contain 0.1% BSA

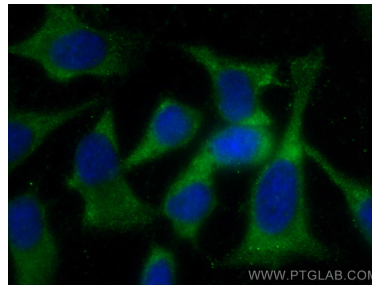
For technical support and original validation data for this product please contact:
T: 1 (888) 4PTGLAB (1-888-478-4522) (toll free in USA), or 1(312) 455-8498 (outside USA)
E: proteintech@ptglab.com
W: ptglab.com

This product is exclusively available under Proteintech Group brand and is not available to purchase from any other manufacturer.

Selected Validation Data



Various lysates were subjected to SDS PAGE followed by western blot with 14432-1-AP (GPX4 antibody) at dilution of 1:6000 incubated at room temperature for 1.5 hours.



Immunofluorescent analysis of (-20°C Methanol) fixed HeLa cells using GPX4 antibody (14432-1-AP) at dilution of 1:200 and CoraLite® 488-Conjugated AffiniPure Goat Anti-Rabbit IgG(H+L).