

For Research Use Only

PPME1 Polyclonal antibody

Catalog Number: 14435-1-AP

2 Publications



Basic Information

Catalog Number:

14435-1-AP

Size:

150ul, Concentration: 300 ug/ml by Nanodrop and 267 ug/ml by Bradford method using BSA as the standard;

Source:

Rabbit

Isotype:

IgG

Immunogen Catalog Number:

AG5817

GenBank Accession Number:

BC050705

GeneID (NCBI):

51400

UNIPROT ID:

Q9Y570

Full Name:

protein phosphatase methyltransferase

1

Calculated MW:

42 kDa

Observed MW:

44 kDa

Purification Method:

Antigen affinity purification

Recommended Dilutions:

WB 1:1000-1:10000

IHC 1:50-1:500

Applications

Tested Applications:

WB, IHC, ELISA

Cited Applications:

WB

Species Specificity:

human, mouse, rat

Cited Species:

human

Note-IHC: suggested antigen retrieval with TE buffer pH 9.0; (*) Alternatively, antigen retrieval may be performed with citrate buffer pH 6.0

Positive Controls:

WB: HeLa cells, mouse brain tissue, human brain tissue, fetal human brain tissue, A549 cells, rat brain tissue

IHC: mouse brain tissue, mouse testis tissue

Background Information

PPME1 (Protein phosphatase methyltransferase 1) is a protein phosphatase 2A (PP2A)-specific methyl transferase that negatively regulates PP2A through demethylation at its carboxy terminal leucine 309 residue (PMID: 24253382). PPME1 plays an important role in the development of cancers and may be a biomarker for pancreatic carcinoma, gastric and lung cancer (PMID: 32351291).

Notable Publications

Author	Pubmed ID	Journal	Application
Xiaowen Bi	33603756	Front Immunol	WB
Jing Yao	39254567	Neural Regen Res	WB

Storage

Storage:

Store at -20°C. Stable for one year after shipment.

Storage Buffer:

PBS with 0.02% sodium azide and 50% glycerol pH 7.3.

Aliquoting is unnecessary for -20°C storage

*** 20ul sizes contain 0.1% BSA

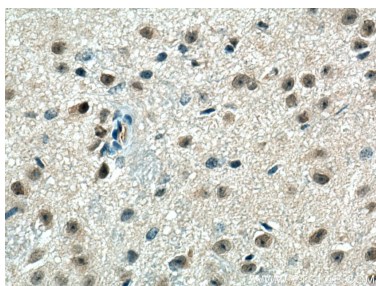
For technical support and original validation data for this product please contact:

T: 1 (888) 4PTGLAB (1-888-478-4522) (toll free in USA), or 1(312) 455-8498 (outside USA)

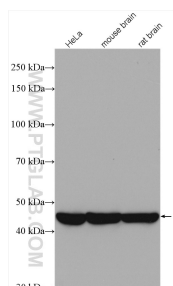
E: proteintech@ptglab.com
W: ptglab.com

This product is exclusively available under Proteintech Group brand and is not available to purchase from any other manufacturer.

Selected Validation Data



Immunohistochemical analysis of paraffin-embedded mouse brain tissue slide using 14435-1-AP (PPME1 antibody) at dilution of 1:200 (under 40x lens). Heat mediated antigen retrieval with Tris-EDTA buffer (pH 9.0).



Various lysates were subjected to SDS PAGE followed by western blot with 14435-1-AP (PPME1 antibody) at dilution of 1:1000 incubated at room temperature for 1.5 hours.